

PanelCheck: Quality Assurance in Sensory Profile Data

Per Bruun Brockhoff and Niels Axel Sommer, IMM, DTU.

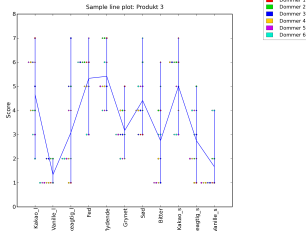
PanelCheck: Visual analysis!

Free open-source software developed by MATFORSK and IMM, DTU for analysis of sensory profile data and panel performance monitoring.

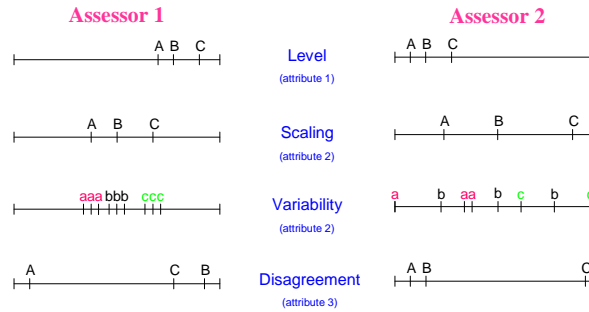
Features:

- Line plots
- Correlation plots
- Eggshell plots
- ANOVA F-plots
- MSE-plots
- p*MSE plots
- Tucker1 plots

Line plots:

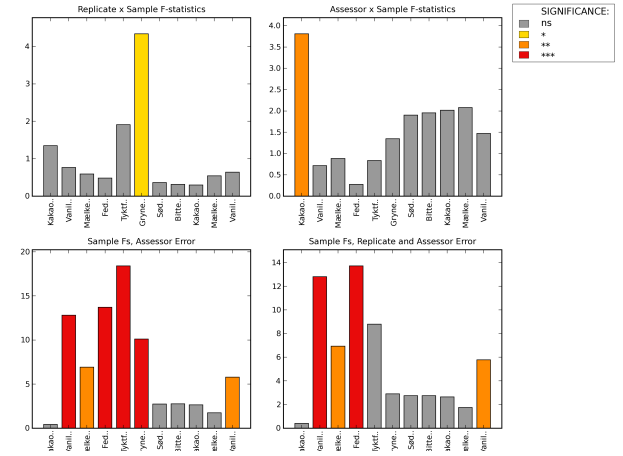


Basic univariate assessor performance

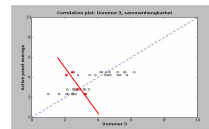


Capital A, B and C illustrate mean scores for 3 different products. Lower case letters illustrate replicates.

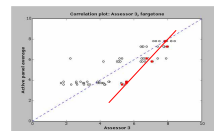
Visual Mixed model ANOVA



Correlation plots:



Assessor 3 is in disagreement with panel consensus!



Assessor 3 is now in agreement with panel consensus!
Assessor 3 uses a smaller part of the scale!

Partners:

Denmark: (Supported by DFFE)

Life-KU.
Danish Institute for Fisheries Research
Danish Meat Research Institute
Chr. Hansen A/S
ChewTech A/S
Bang & Olufsen

Norway: (Supported by Norwegian Research Council)

Matforsk, Ås, Norway
Tine, Gilde, Arcus AS, Hennig Olsen Is, Fiskeriforskning

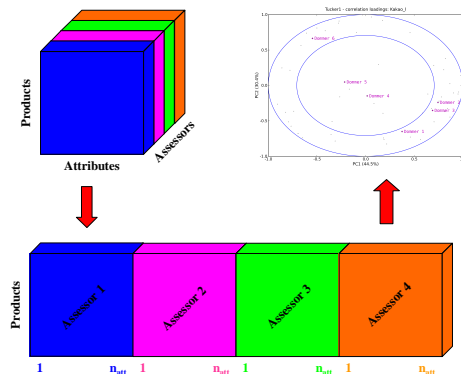
Course at Hotel Imperial, Copenhagen 19-21 June 2007:

COURSE 1:
INTRODUCTION TO STATISTICS FOR SENSORY ANALYSIS AND PANEL MONITORING

COURSE 2:
HANDS-ON TRAINING FOR USING PANELCHECK

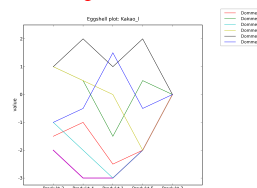
More info: www.matforsk.no/Panelcheck

Multivariate assessor performance



Eggshell plots:

Disagreement:



Agreement:

