

# Toolboxes and Databases in Neuroinformatics

Finn Årup Nielsen

Lundbeck Foundation Center for Integrated Molecular Brain Imaging

at

Informatics and Mathematical Modelling

Technical University of Denmark

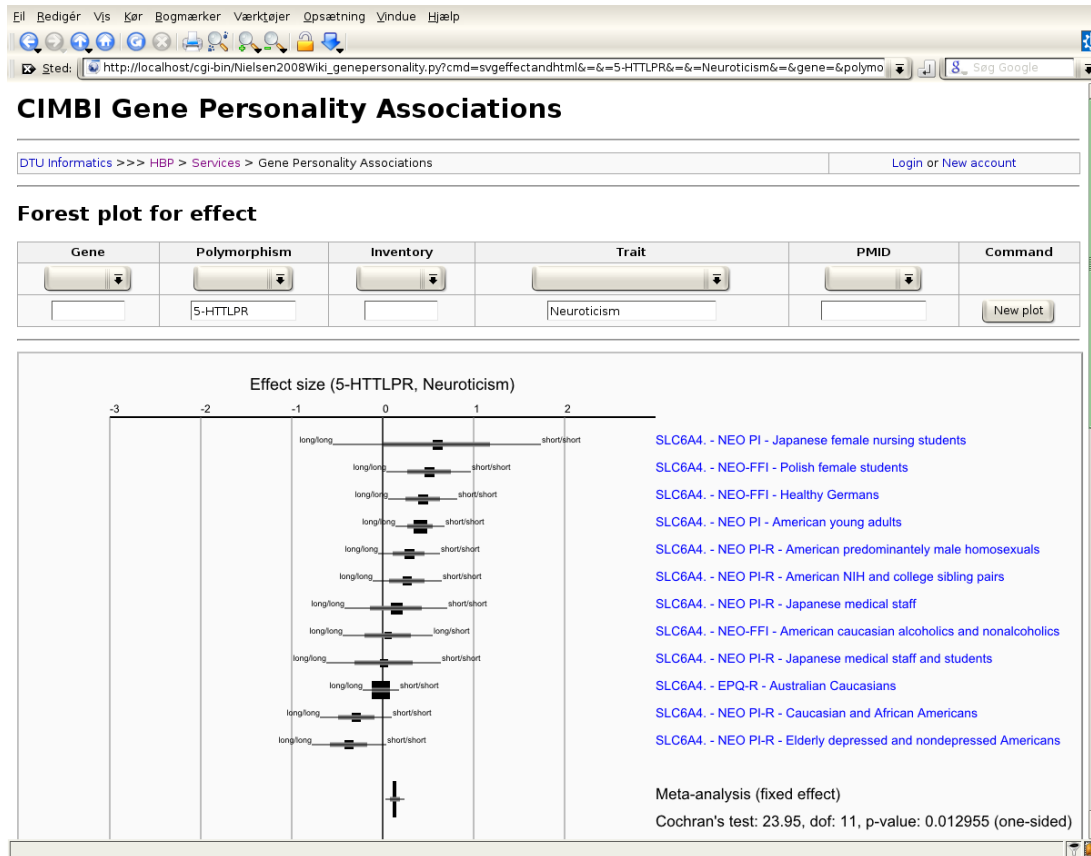
and

Neurobiology Research Unit,

Copenhagen University Hospital Rigshospitalet

November 25, 2008

# Why database in neuroscience?



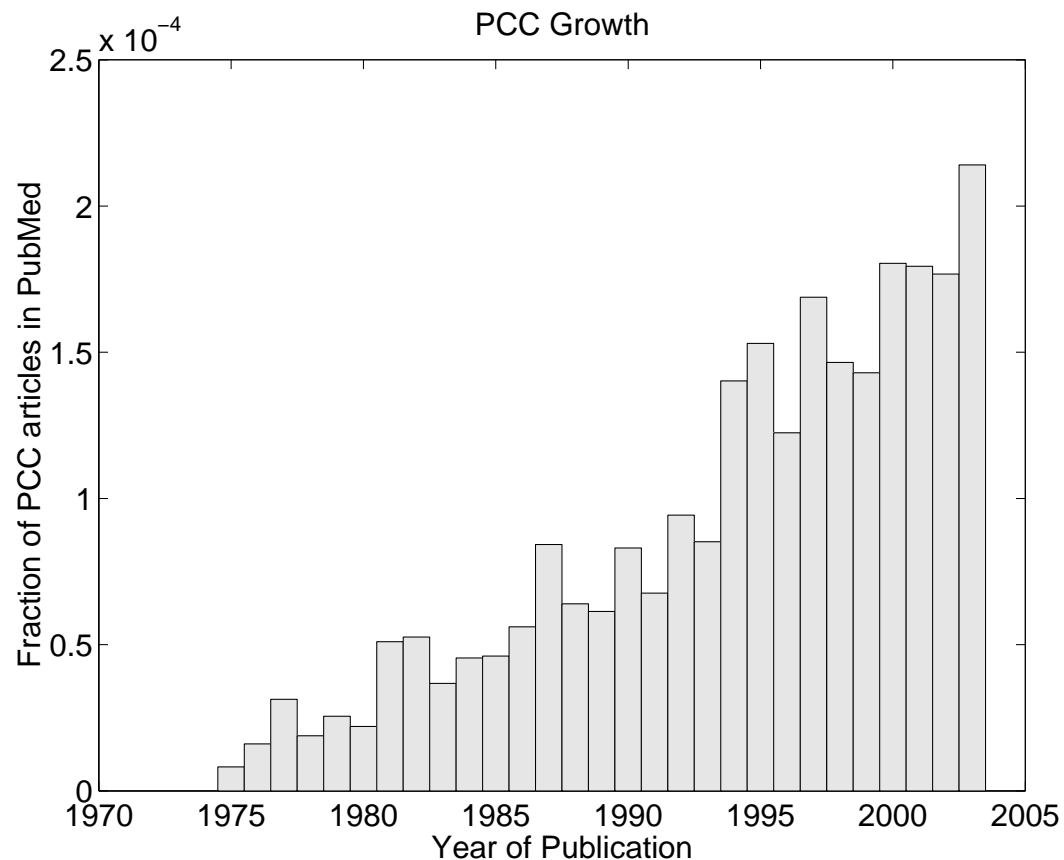
There are too much data for one person to crasp

The results across experiments are too conflicting

Need for tools that collect data across studies, bring order to data, make search easy and automate analyses to bring out consensus results: **meta-analytic databases**

Classical: PubMed, OMIM, Google Scholar, The Cochrane Collaboration, ...

# Information increase



The number of articles increases.

Can databases and computer-based methods help to organize the large amount of new data?

How should data be represented? How can they be entered into a database? Which data mining methods can be developed? Internet services like bioinformatics?

Figure 1: Increase in the number of articles in PubMed which are returned after searching on “Posterior cingulate”.

# Functional human brain mapping

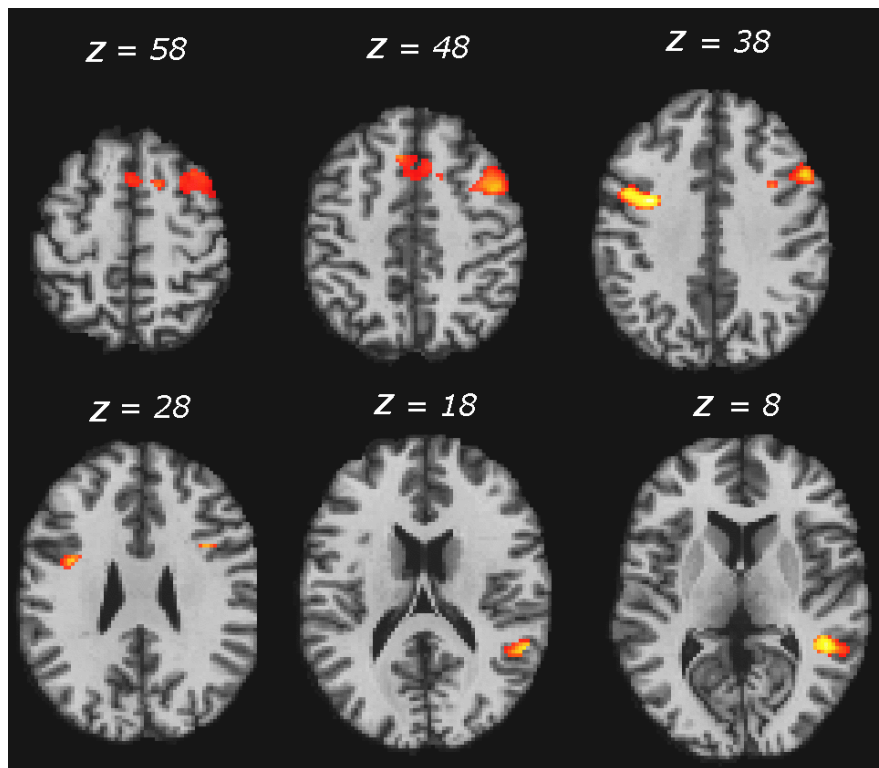


Figure 2: Figure from (Balslev et al., 2005).

“Activation studies” or patient-control comparisons with PET, fMRI or SPECT. Lesions studies with MRI.

Results often represented in the literature as 3-dimensional coordinates wrt. a standardized stereotaxic system (“Talairach”)

$(x, y, z)$	$z$ -score
$-38, 0, 40$	4.91
$48, -42, 8$	4.66
$52, 14, 38$	4.07

# BrainMap database

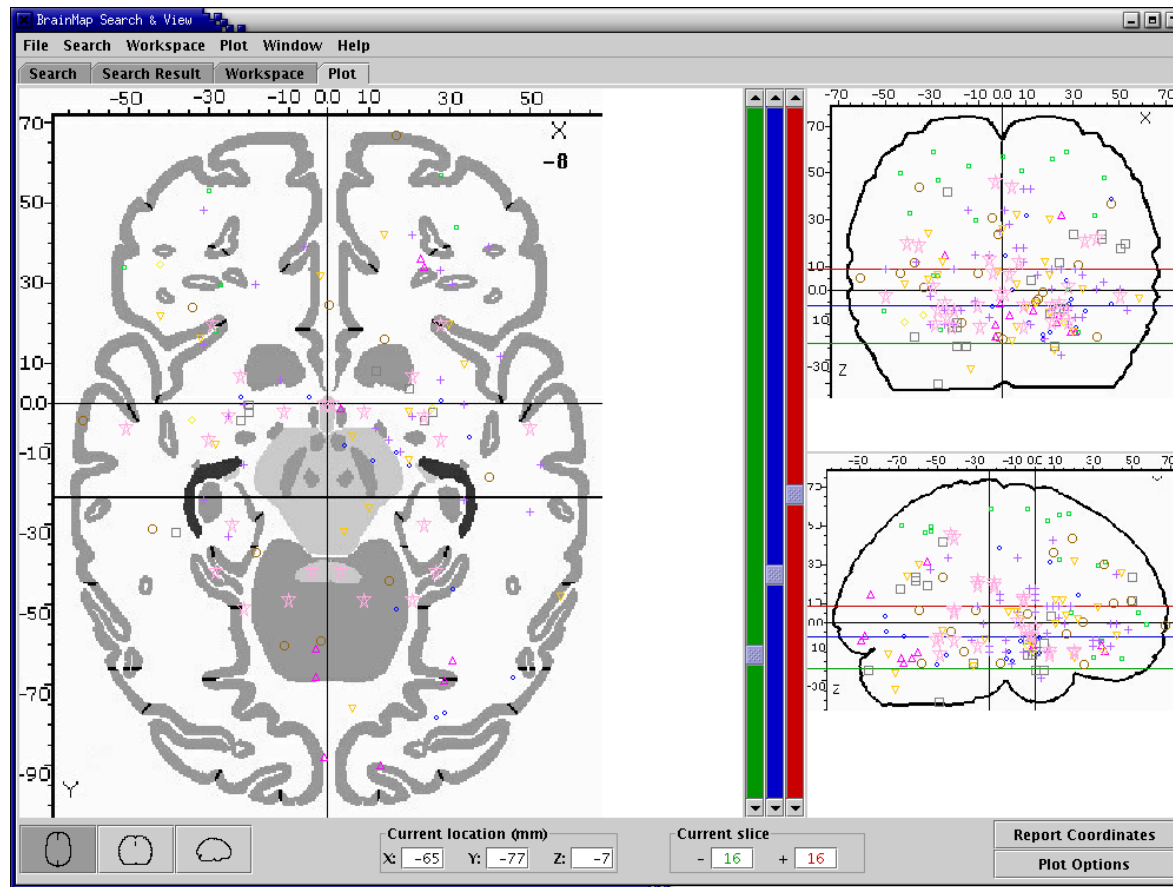


Figure 3: Screen shot of a graphical user interface to the BrainMap database with Talairach coordinates plotted after a search for experiments on olfaction.

One of the first and most comprehensive databases (Fox et al., 1994; Fox and Lancaster, 2002)

Presently 61866 locations from 1660 papers (2008 November)

Graphical web-interface with search facilities, e.g., on author, 3D coordinate, ...

Also possible to submit new studies

# Brede Database

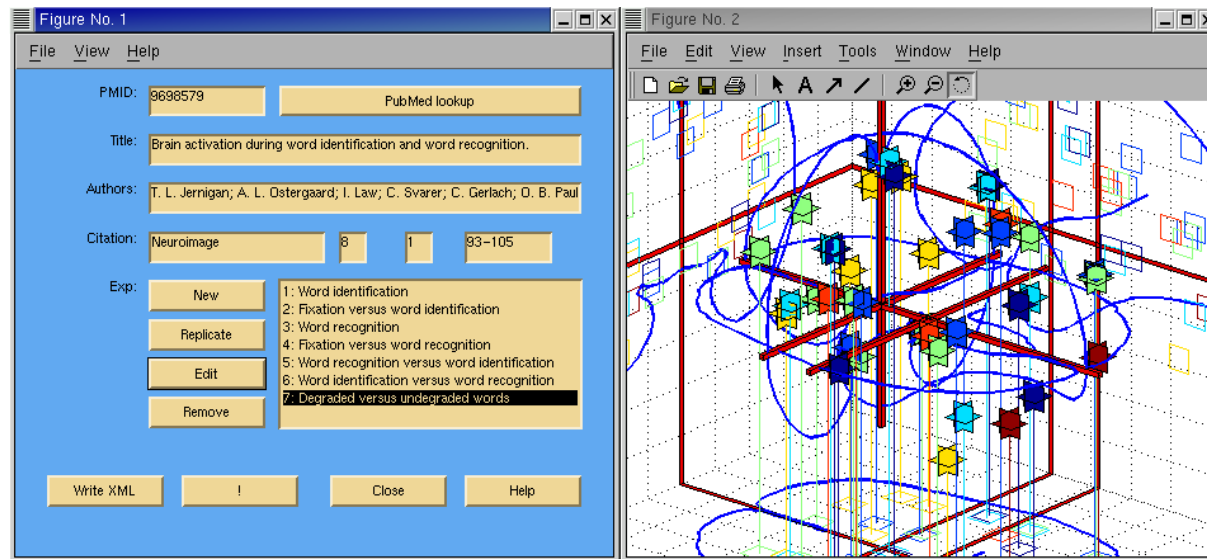


Figure 4: Screenshot of a program for entering data. Here with a study of (Jernigan et al., 1998).

Smaller Brede Database similar to BrainMap (Nielsen, 2003).

Every studie saves, e.g., author, article title, abstract, scanner, number of subjects, coordinates, anatomical names, topic under study.

Taxonomy for brain regions and topics

# Entry of information in the Brede database

**Figure No. 2: Data Entry Form**

**Bib:**

**Loc:**

**Capsule Description:**

**Free form description:**

**Specific task:**

**Navigation:**

**Actions:**

**Figure No. 4: Data Table**

	Lobar Anatomy	#Voxels	P-value (cluster)	Z-score	P-value (correcte)	X	Y	Z
1:	gyrus/posterior cingulate gyrus	1528	<0.001	7.25	<0.001	52	-30	20
2:	Left inferior parietal lobe	307	0.011	6.78	<0.001	-56	-34	28
3:	Medial frontal gyrus	934	<0.001	6.10	<0.001	4	36	-8
4:	Left middle temporal gyrus	353	0.006	5.99	<0.001	-44	-66	12
5:	Right middle temporal gyrus	248	0.021	5.46	<0.001	44	-70	16
6:	Left entorhinal cortex	162	0.065	5.17	0.001	-16	-2	-16
7:	Left middle frontal gyrus	130	0.102	4.89	0.004	-28	16	44
8:	Left entorhinal cortex	267	0.017	4.74	0.008	22	-2	-16
9:	Left middle frontal gyrus	47	0.376	4.65	0.011	-34	32	24
10:								

**Navigation:**

**Actions:**

Each location is primarily represented by the 3D-coordinate and a textual field indicating the brain region

## XML “Lowtech” storage

...

```
<brainTemplate>SPM95</brainTemplate>
```

```
<behavioralDomain>Motion, Execution - Saccades</behavioralDomain>
```

```
<woext>57</woext>
```

```
<analysisSoftware>SPM95</analysisSoftware>
```

```
<analysisSoftware>AIR</analysisSoftware>
```

```
<analysisSoftware>AMIR</analysisSoftware>
```

```
<Loc>
```

```
  <type>loc</type>
```

```
  <functionalArea>Left frontal eye field</functionalArea>
```

```
  <brodmann></brodmann>
```

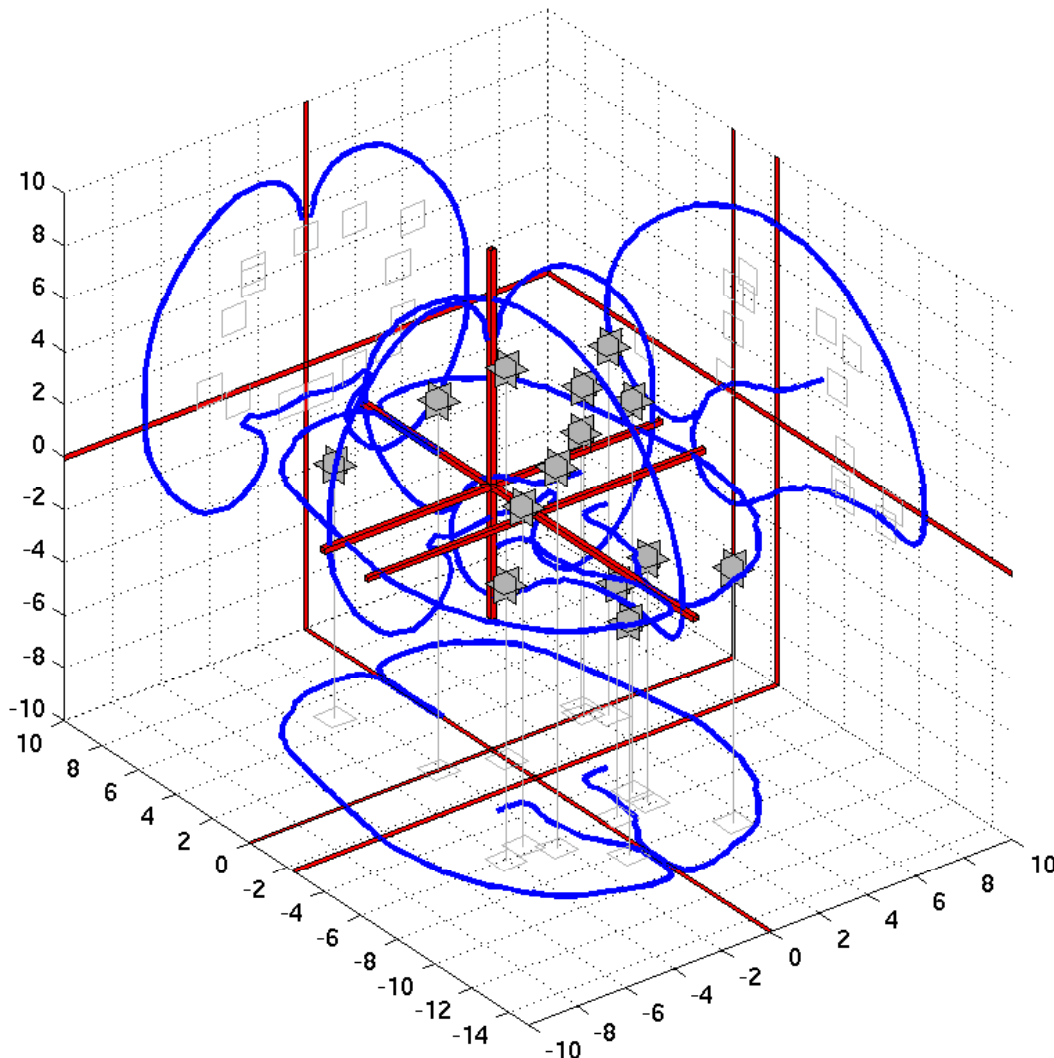
```
  <zScore>4.82</zScore>
```

```
  <coordReported>-0.050000 -0.002000 0.036000</coordReported>
```

...



# Read coordinates from a spreadsheet



Coordinate information may also be read from a spreadsheet via a “comma separated values” file with columns “x”, “y” and “z”.

Coordinates read and plotted from a study (Law et al., 1997).

## Matlab commands

Matlab commands to read a spreadsheet and display them in a 3D plot:

```
L = brede_read_csv2loc('LawI1997Activation_1.csv');  
figure, brede_ta3_frame, brede_ta3_loc(L)  
print -depsc /home/fnielsen/fnielsen/eps/Nielsen2006Toolboxes_law3d.eps
```

# Searching on Talairach coordinate

#	Distance	x	y	z	WOBIB	Description
1	0.5	13	14	8	76	Right caudate nucleus — Correlated with pain ratings in hot pain on right hand in rest, mental imagery and hypnosis (WOEXP: 238)
2	3.5	15	11	6	92	Caudate nucleus — Mildly depressed cancer patients (WOEXP: 293)
3	4.9	15	12	13	180	Right caudate nucleus — Intelligence and gray matter volume negative correlation (WOEXP: 564)
4	7.0	12	8	12	178	Right caudate — Semantic versus case (WOEXP: 550)
5	7.5	10	8	11	178	Right caudate — Semantic versus syllable counting via case judgment (WOEXP: 558)
6	8.1	5	14	8	76	Right caudate nucleus — Hot pain on right hand during hypnosis (WOEXP: 235)
7	8.3	13	7	3	171	Right striatum — Rhyme judgement and nonlinear ('convex') response in rapid auditory processing (WOEXP: 526)
8	8.3	13	7	3	171	Right striatum — Rhyme judgement and linear increase response in rapid auditory processing (WOEXP: 527)
9	9.8	13	5	3	92	Putamen — Mildly depressed cancer patients (WOEXP: 293)

Result after search for nearest coordinates to (14, 14, 9).

Translation of the data from XML to SQL (Szewczyk, 2008)

Perl + SQLite web-script

Also possible from to call and get results from within an image analysis program (Wilkowski et al., 2009)

Similar searches possible in xBrain and Antonia Hamilton's AMAT programs.

# Searching on experiments

+1: 1.00000 [Mentalizing versus rule solving](#). *Playing a computer-based version of "stone, paper, scissor" while believing the opponent was an other human versus playing while believing the opponent was a computer with a fixed rule-based algorithm*. WOEXP: [218](#).

Helen L. Gallagher; Anthony I. Jack; [Andreas Roepstorff](#); [Christopher D. Frith](#). *Imaging the intentional stance in a competitive game*. *NeuroImage* **16**(3 Pt 1):814-21, 2002. PMID: [12169265](#). WOBIB: [70](#).

+2: 0.68676 [Posttraumatic stress disorder](#). *Benzodiazepine binding in posttraumatic stress disorder versus binding in normal subjects*. WOEXP: [206](#).

J. D. Bremner; R. B. Innis; S. M. Southwick; L. Staib; S. Zoghbi; D. S. Charney. *Decreased benzodiazepine receptor binding in prefrontal cortex in combat-related posttraumatic stress disorder*. *American Journal of Psychiatry* **157**(7):1120-1126, 2000. PMID: [10873921](#). WOBIB: [67](#).

+3: 0.67565 [Forgiveness judgements](#). *Judgements of visually displayed sentences about forgiveness situations with button press versus judgement involving social reasoning*. WOEXP: [451](#).

T. F. Farrow; Y. Zheng; I. D. Wilkinson; S. A. Spence; J. F. Deakin; N. Tarrier; P. D. Griffiths; P. W. Woodruff. *Investigating the functional anatomy of empathy and forgiveness*. *NeuroReport* **12**(11):2433-2438, 2001. PMID: [11496124](#). FMRIDCID: . WOBIB: [147](#).

+4: 0.64805 [Case judgment versus syllable counting](#). *Case judgment of letters from visually presented words with button press versus counting the number of syllables in a visually presented word*. WOEXP: [553](#).

[Russell A. Poldrack](#); [Anthony D. Wagner](#); Matthew W. Prull; [John E. Desmond](#); [Gary H. Glover](#); [John D. E. Gabrieli](#). *Functional Specialization for Semantic and Phonological Processing in the Left Inferior Prefrontal Cortex*. *NeuroImage* **10**(1):15-35, 1999. PMID: [10385578](#). DOI: [10.1006/nimg.1999.0441](#). FMRIDCID: . WOBIB: [178](#).

+5: 0.60237 [Subject 3: Answering self-reflective questions versus answering semantic questions](#). *Self-reflective and semantic yes/no questions posed through headphones were answered with button press*. WOEXP: [56](#).

Sterling C. Johnson; Leslie C. Baxter; Lana S. Wilder; James G. Pipe; Joseph E. Heiserman; George P. Prigatano. *Neural correlates of self-reflection*. *Brain* **125**(Pt 8):1808-14, 2002. PMID: [12135971](#). WOBIB: [20](#).

List with results after searching experiments that report similar activations as a “mentalizing” experiment of (Gallagher et al., 2002).

# Online experiment search

Brede  
brede\_exp\_query - Search after experiments with Talairach coordinates in the Brede Database

14, -9, -15;  
-15, -10, -14;

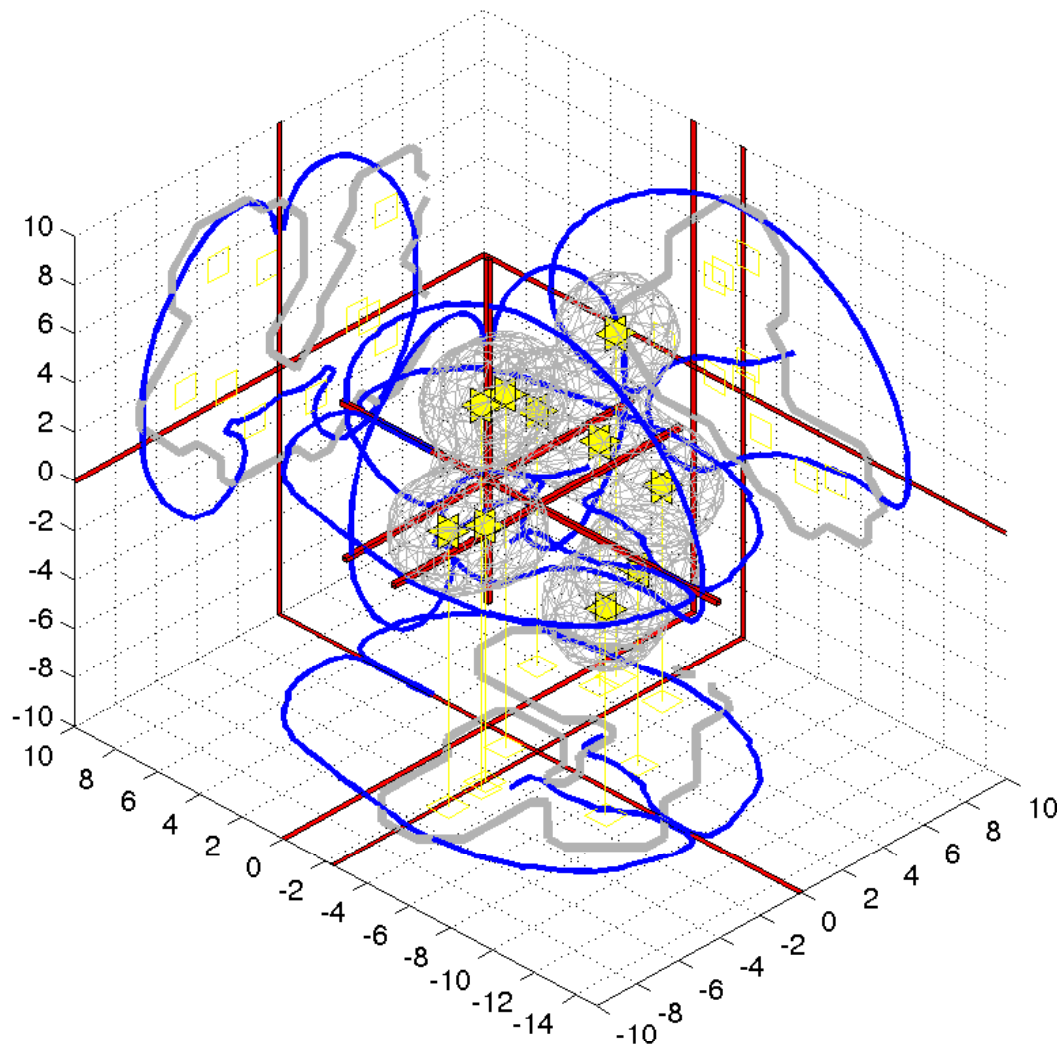
Experiment search e.g., 14 -9 -15, -15 -10 -14

#	Similarity	WOBIB	WOEXP	Experiment
1	0.985599	4	9	<b>Sexual arousal - male.</b> Sexual arousal by viewing erotic film excerpts. WOEXP: 9. Karama (2002) <i>Areas of brain activation in males and females during viewing of erotic film excerpts</i> . WOBIB: 4.
2	0.980475	77	241	<b>Increase during public speaking for subjects with social phobia.</b> Increases in the interaction between public speaking to an audience about past experiences and subjects with social phobia versus private speaking about past experience and subjects with no social phobia. WOEXP: 241. Tillfors (2001) <i>Cerebral blood flow in subjects with social phobia during stressful speaking tasks: a PET study</i> . WOBIB: 77.
3	0.924246	156	481	<b>Fearful faces.</b> Categorization of fearful face versus happy faces. WOEXP: 481. Canli (2002) <i>Amygdala response to happy faces as a function of extraversion</i> . WOBIB: 156.
4	0.889565	177	544	<b>Sadness from films.</b> Sadness generated from viewing silent color feature film involving grieving a friend who committed suicide by hanging versus view neutral films and recalling neutral autobiographical memories. WOEXP: 544. Lane (1997) <i>Neuroanatomical Correlates of Happiness, Sadness, and Disgust</i> . WOBIB: 177.

http://hendrix.imm.dtu.dk/services/jerne/brede/WOEXP\_9.html

Online search on two coordinates in left and right amygdala in the experiments recorded in the Brede Database.

# Coordinates-to-volume transformation

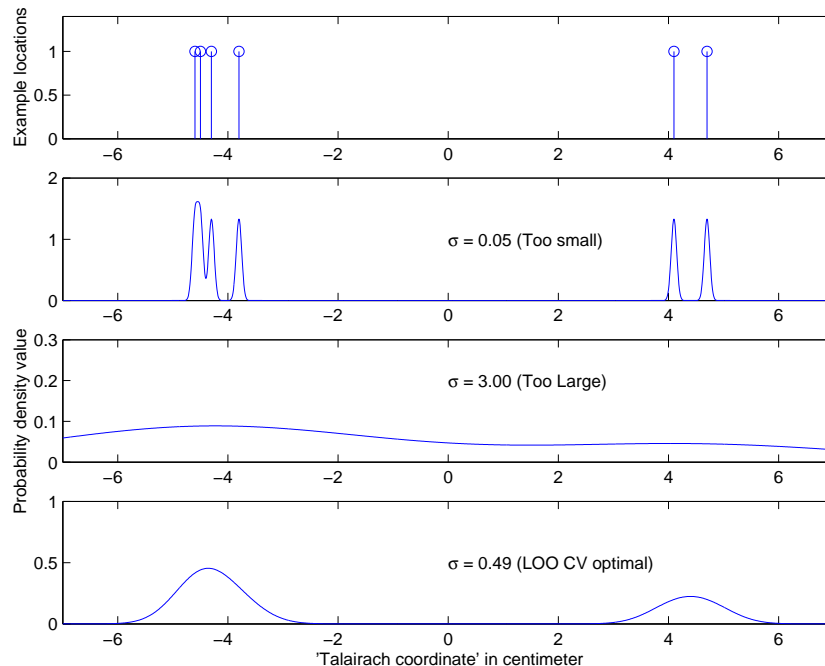


Coordinates in an article converted to volume-data by filtering each point (kernel density estimation) (Nielsen and Hansen, 2002; Turkeltaub et al., 2002)

One volume for each article

Yellow coordinates from a study by (Blinkenberg et al., 1996), with grey wireframe indicating the isosurface in the generated volume

# Kernel density estimators for locations



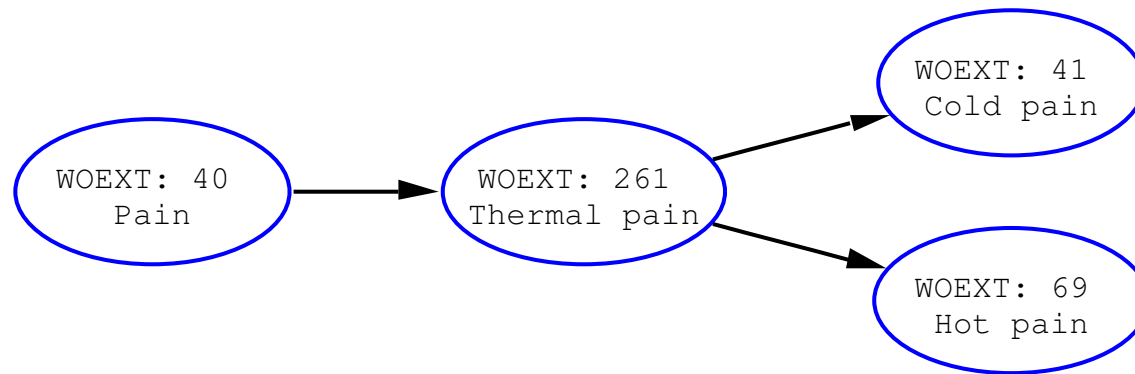
Regard the “locations” as being generated from a distribution  $p(\mathbf{x})$ , where  $\mathbf{x}$  is in 3D Talairach space (Fox et al., 1997).

Kernel methods ( $N$  kernels centered on each location:  $\mu_n$ ) with homogeneous Gaussian kernel in 3D Talairach space  $\mathbf{x}$

$$\hat{p}(\mathbf{x}) = \frac{(2\pi\sigma^2)^{-3/2}}{N} \sum_n e^{-\frac{1}{2\sigma^2}(\mathbf{x}-\mu_n)^2}$$

$\sigma^2$  fixed ( $\sigma = 1\text{cm}$ ) or optimized with leave-one-out cross-validation (Nielsen and Hansen, 2002).

## Taxonomy for cognitive components, . . .



Memory, episodic memory, episodic memory retrieval, empathy, disgust, 5-HT<sub>2A</sub> receptor, . . .

Organized in a hierarchy — a directed acyclic graph.



# Supervised labeling

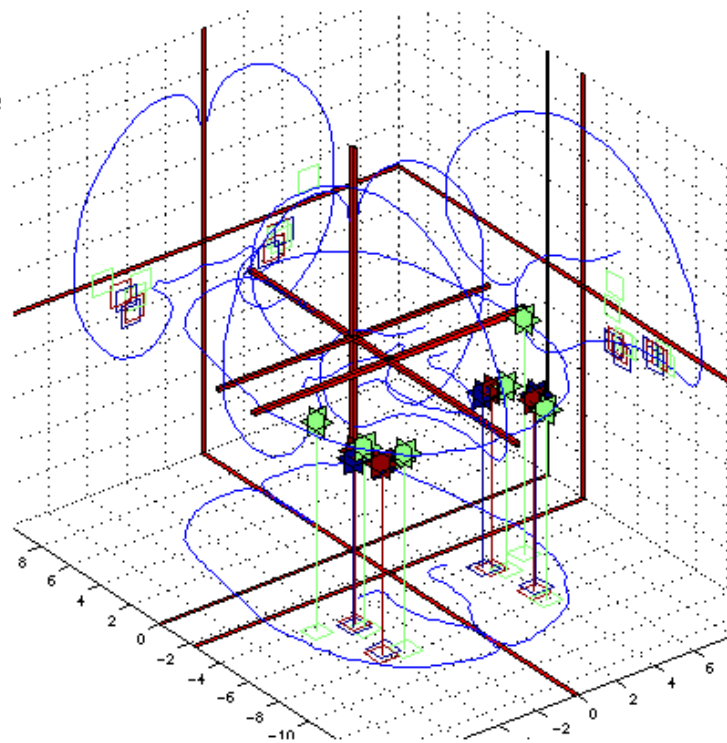
**WOEXT: 23. Face recognition.**  
Processing of face images.

Parents	Siblings	Children
Visual object recognition		



## Experiments:

1. **Face visual object.** *Visual objects: Faces versus building.* WOEXP: [11](#).  
I Levy; U Hasson; G Avidan; T Hendler; R Malach. *Center-periphery organization of human object areas.* *Nat Neurosci* **4**(5):533–9, 2001.  
PMID: [11319563](#). WOBIB: [5](#).
2. **Photographs of faces versus houses and chairs.** *Conjunction between passive viewing and delayed match-to sample of gray-scale photographs versus scrambled pictures and faces versus houses and chairs, with matching choice indicated by pressing a button with the right of left thumb.* WOEXP: [91](#).  
A. Ishai; L. G. Ungerleider; A. Martin; J. V. Haxby. *The representation of objects in the human occipital and temporal cortex.* *J Cogn Neurosci* **12 Suppl** 2:35–51, 2000.  
PMID: [11506646](#). FMRIDCID: [2-2000-1113D](#). WOBIB: [28](#).
3. **Front-face.** *Line drawings of front face versus line drawings of tumblers.* WOEXP: [123](#).  
U. Hasson; T. Hendler; D. Ben Bashat; R. Malach. *Vase or face? A neural correlate of shape-selective grouping processes in the human brain.* *J Cogn Neurosci* **13**(6):744–53, 2001.  
PMID: [11564319](#). FMRIDCID: [2-2001-111P8](#). WOBIB: [36](#).

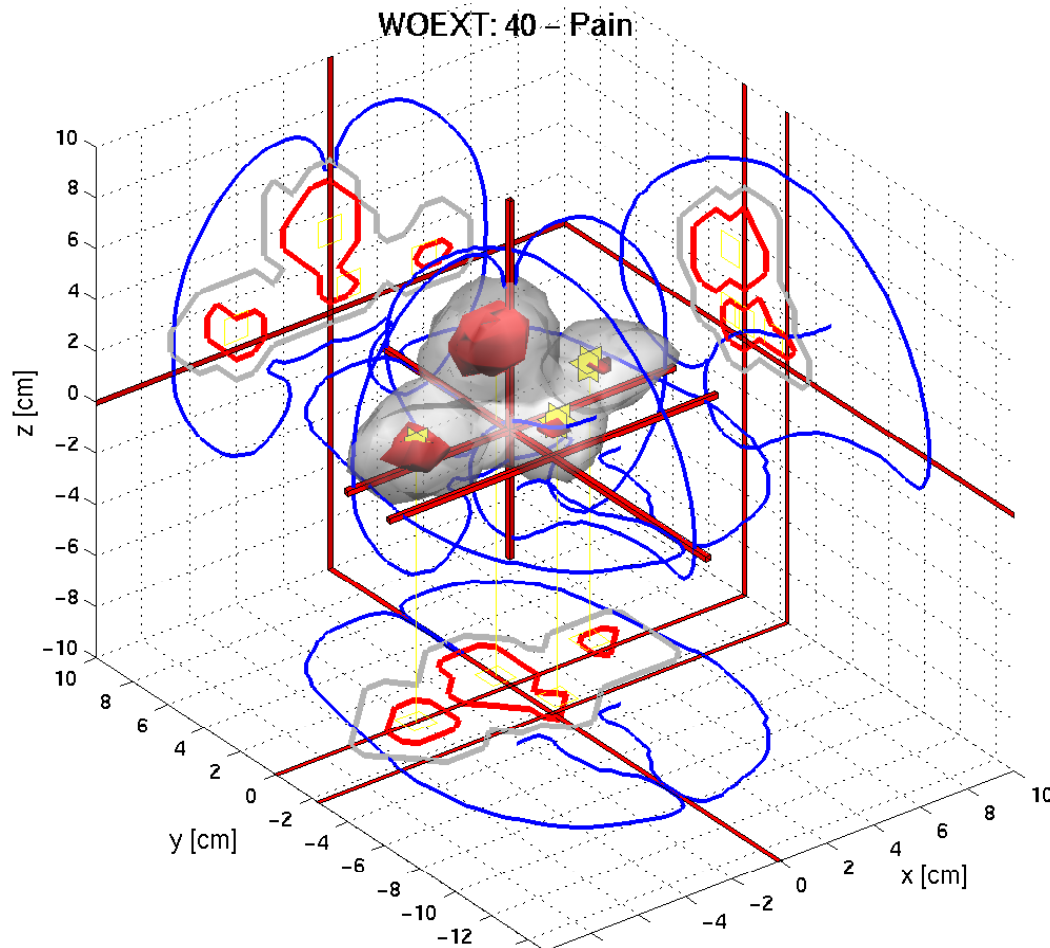


Example with “Face recognition” studies in a “corner cube” visualization.

The “expert” label added during database entry can provide the grouping structure.

Statistical tests can be constructed to measure whether the spatial distribution is “clustered” (Turkeltaub et al., 2002; Nielsen, 2005).

# Supervised data mining



Volume for a specific taxonomic component: "Pain"

Volume threshold at statistical values determined by re-sampling statistics (Nielsen, 2005).

Red areas are the most significant areas: Anterior cingulate, anterior insula, thalamus. In agreement with "human" reviewer (Ingvar, 1999).

# Two sets of coordinates: Compare these!

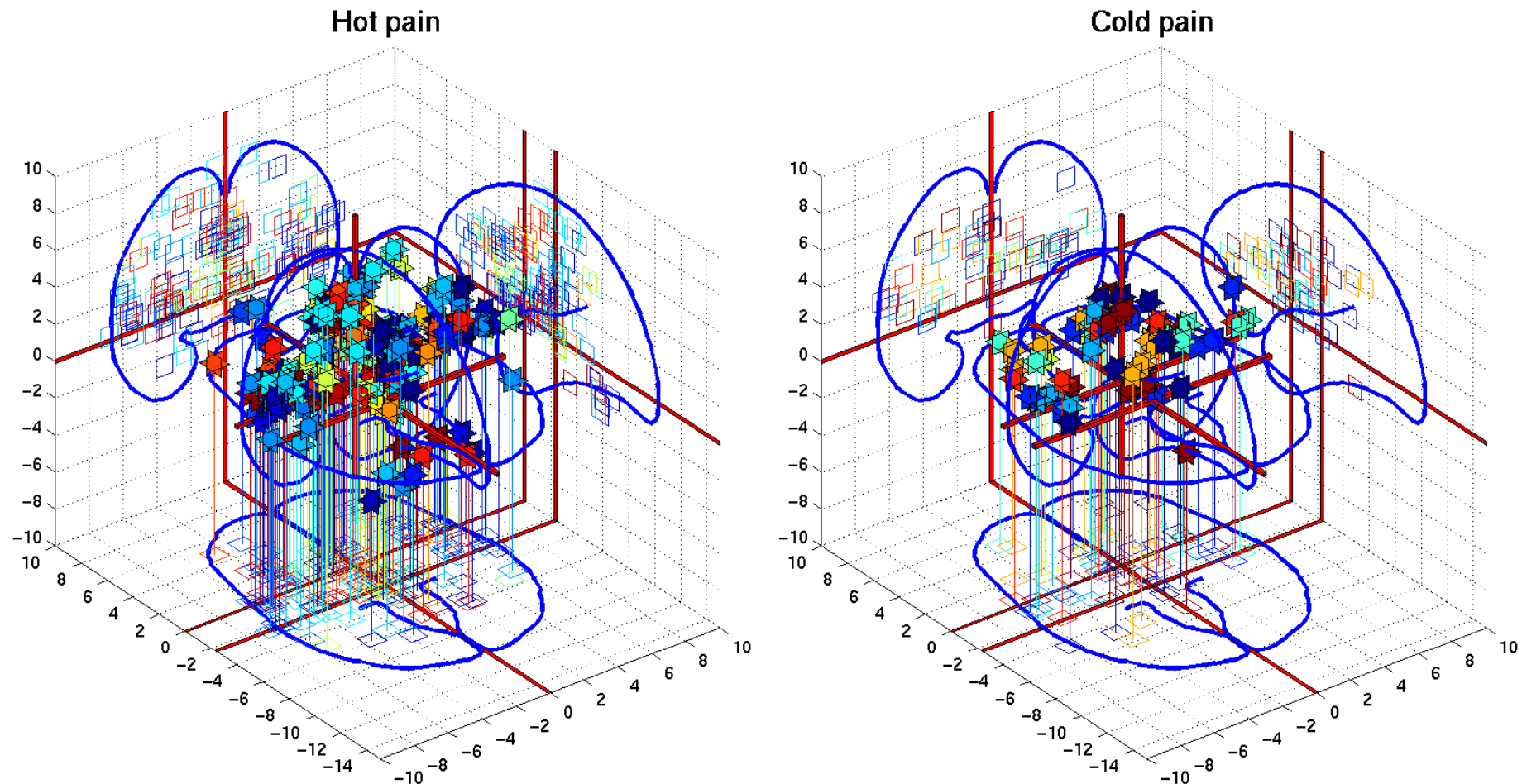


Figure 5: Visualization of the Talairach coordinates from hot pain and cold pain studies

# Testing for difference

Two groups are compared by looking at the subtraction volume image

$$\mathbf{t} = \mathbf{v}_1 - \mathbf{v}_2. \quad (1)$$

The statistic is the maximum in the subtraction image

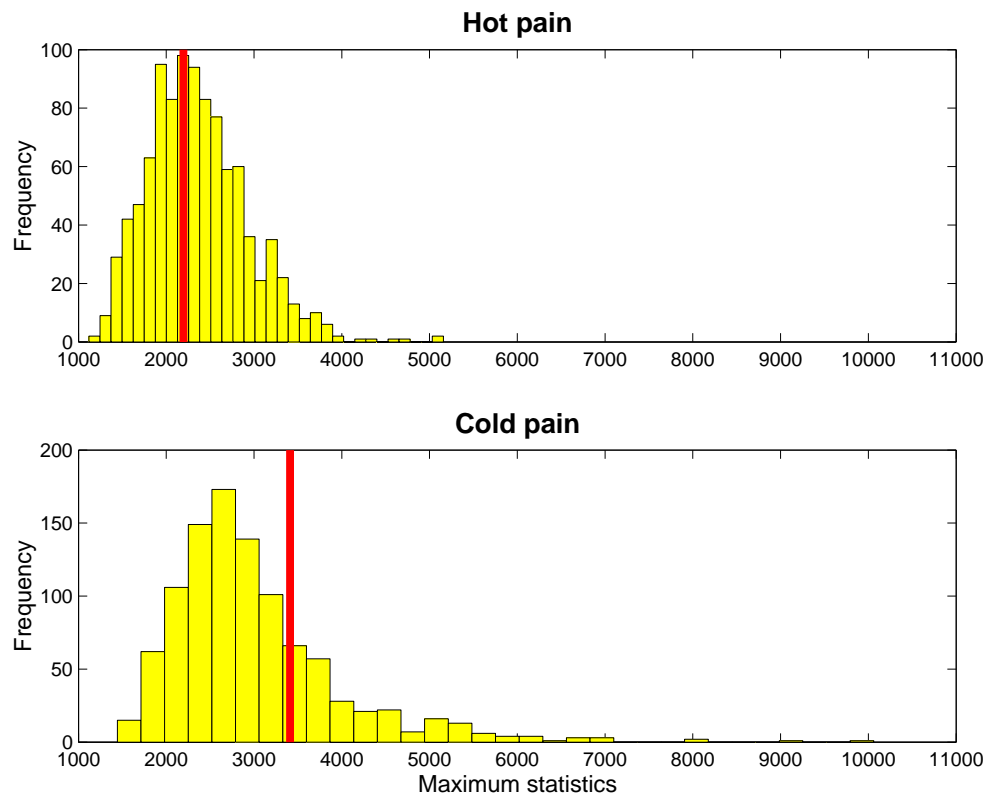
$$t = \max_i(t_i) \quad (2)$$

A null distribution is established by resampling the labels between the two sets of Talairach coordinates and computing the resampled maximum statistic  $t_n^*$  for all  $N$  resamplings.

The  $P$ -value for the  $i$ th voxel is the proportion of resampled maximum statistics above the statistic  $t_i$  (Nielsen et al., 2004a)

$$P_i = 1/N \sum_n^N |t_i < t_n^*|. \quad (3)$$

# Resampling distribution



Histogram of resampled maximum statistics with 1000 resamplings.

Two plot: Different numbers of experiments in hot (24) and cold (8) pain:

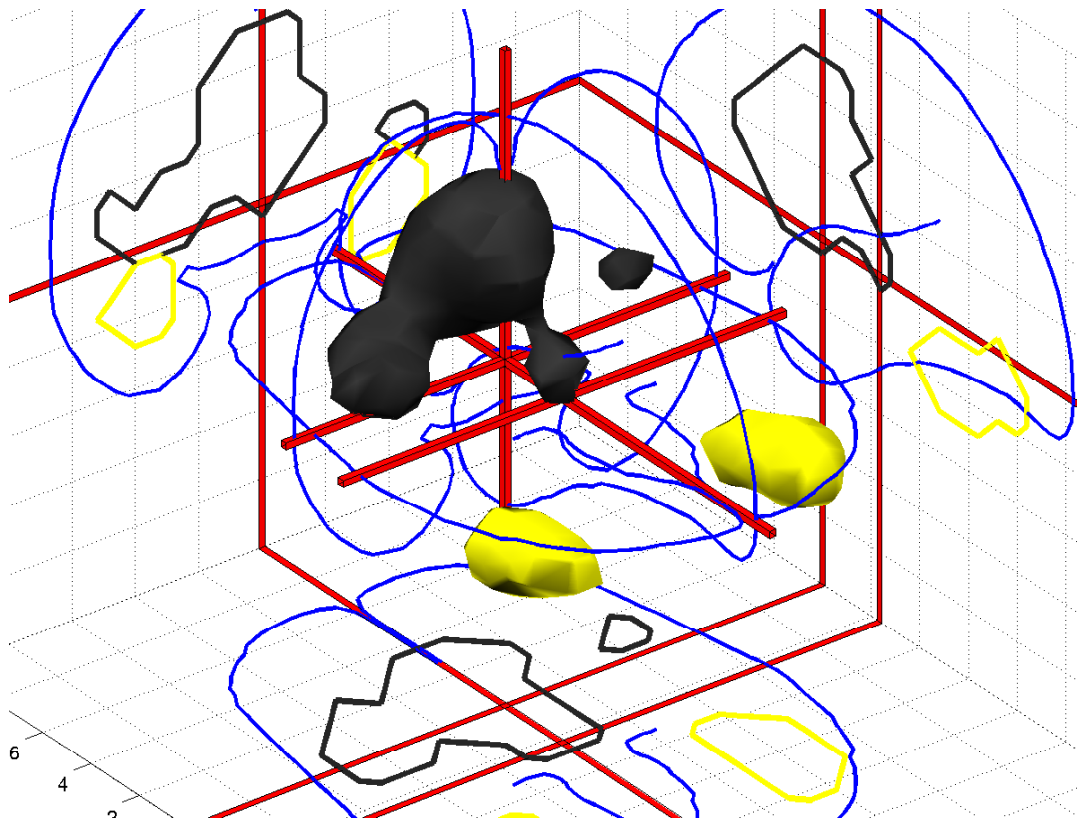
$$t_{\text{hot}} = \max(\mathbf{v}_{\text{hot}} - \mathbf{v}_{\text{cold}})$$

$$t_{\text{cold}} = \max(\mathbf{v}_{\text{cold}} - \mathbf{v}_{\text{hot}}).$$

No difference between hot and cold pain detected.

Figure 6: Empirical histograms of the maximum statistics  $t^*$  after 1000 permutations. The thick red lines indicate the maxima for the hot and cold pain statistics  $t_{\text{hot}}$  and  $t_{\text{cold}}$ .

# Testing between pain and object vision



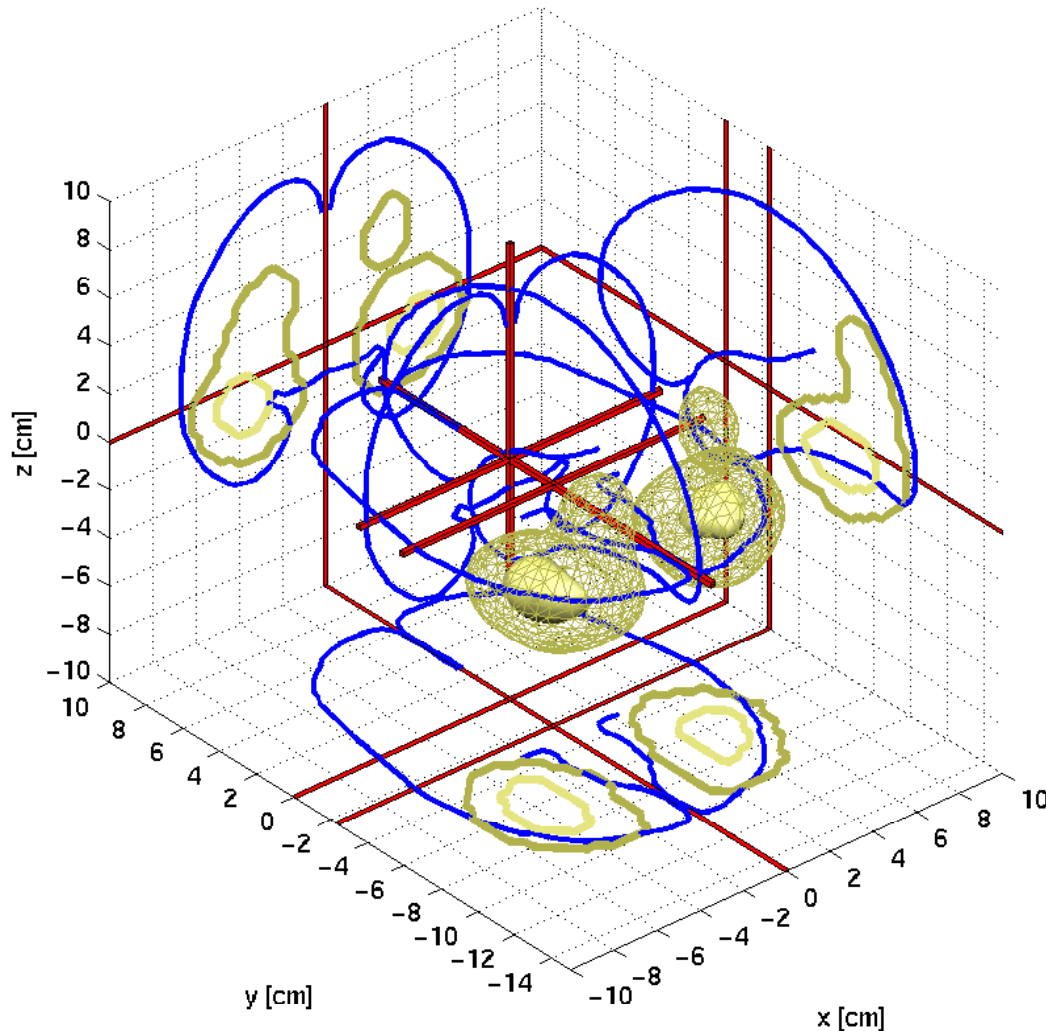
Isosurfaces at thresholds in  $t_{\text{pain}}$  and  $t_{\text{object}}$ .

Thresholds are at the usual 0.05-level.

Expected areas appear above threshold. For pain: Anterior cingulate, insula, thalamus. For visual object recognition: fusiform gyrus.

Figure 7: Statistical image. Black is thermal pain and yellow is visual object recognition.

# Unsupervised data mining



Construction of a matrix  $X$  (papers  $\times$  voxels)

Decomposition of this matrix by multivariate analysis, e.g., principal component analysis, clustering, independent component analysis

Left image: non-negative matrix factorization with components weighting for (perhaps) face recognition (Nielsen et al., 2004b)

Other technique: Replicator dynamics (Neumann et al., 2005).

# Non-negative matrix factorization

Non-negative matrix factorization (NMF) decomposes a non-negative data matrix  $\mathbf{X}(N \times P)$  (Lee and Seung, 1999)

$$\mathbf{X} = \mathbf{WH} + \mathbf{U}, \quad (4)$$

where  $\mathbf{W}(N \times K)$  and  $\mathbf{H}(K \times P)$  are also non-negative matrices.

“Euclidean” cost function for

$$E_{\text{“eucl”}} = \|\mathbf{X} - \mathbf{WH}\|_F^2 \quad (5)$$

Iterative algorithm (Lee and Seung, 2001)

$$\mathbf{H}_{kp} \leftarrow \mathbf{H}_{kp} \frac{(\mathbf{W}^\top \mathbf{X})_{kp}}{(\mathbf{W}^\top \mathbf{WH})_{kp}} \quad (6)$$

$$\mathbf{W}_{nk} \leftarrow \mathbf{W}_{nk} \frac{(\mathbf{XH}^\top)_{nk}}{(\mathbf{WHH}^\top)_{nk}}. \quad (7)$$



## Text representation: a “bag-of-words”

	‘memory’	‘visual’	‘motor’	‘time’	‘retrieval’	...
Fujii	6	0	1	0	4	...
Maddock	5	0	0	0	0	...
Tsukiura	0	0	4	0	0	...
Belin	0	0	0	0	0	...
Ellerman	0	0	0	5	0	...
⋮	⋮	⋮	⋮	⋮	⋮	⋮

Representation of the abstract of the articles in “bag-of-word”. Table counts how often a word occurs

Exclusion of “stop words”: common words (the, a, of, ...), words for brain anatomy, and a large number of common words that appear in abstracts. Mostly words for brain function are left.

# Grouping of words from articles

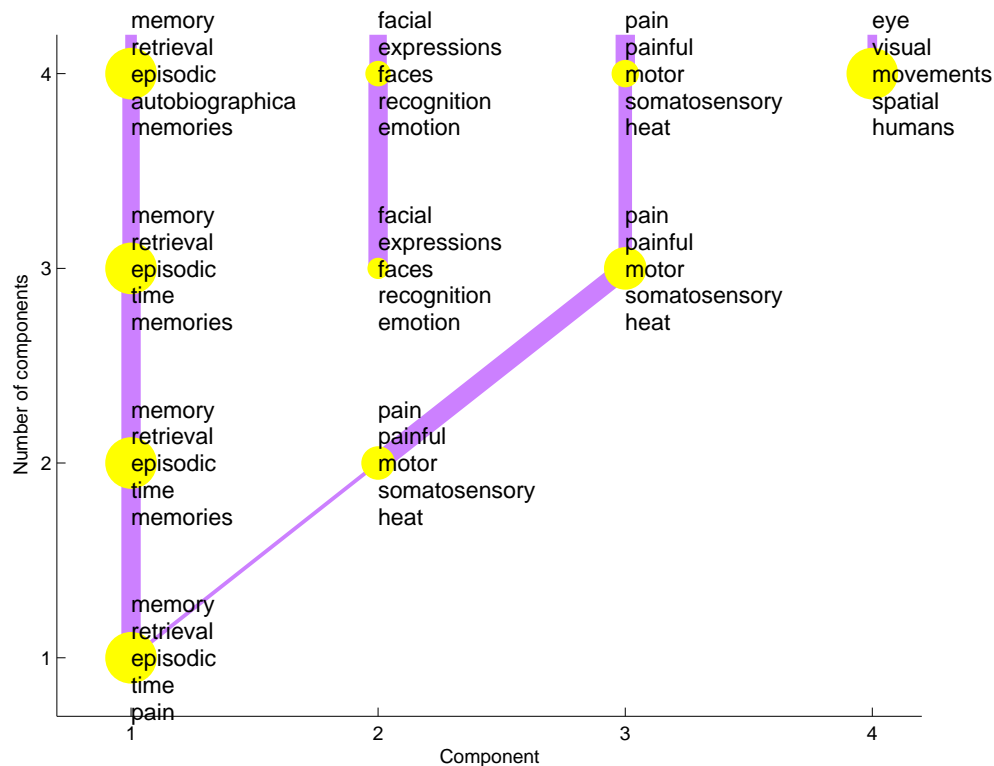


Figure 8: Grouped words.

Multivariate analysis (NMF) of the text in *posterior cingulate* articles to find “themes”, which can be represented with weights over words and articles (Nielsen et al., 2005).

Most dominating words: memory, retrieval, episodic

pain, painful, motor, somatosensory

facial, expressions, faces,

eye, visual, movements

## Matlab commands

```
% B = brede_read_xml(f, 'output', 'collapsesecond');  
load wobibs.mat  
  
M = brede_bib_bib2mat(B, 'type', 'abstract');  
M = brede_mat_elimsingle(M)  
M = brede_mat_elimstop(M, 'filename', 'stop_english1.txt')  
M = brede_mat_elimstop(M, 'filename', 'stop_medline.txt')  
M = brede_mat_elimstop(M, 'filename', 'stop_lobaranatomy.txt')  
M = brede_mat_elimstop(M, 'filename', 'stop_meshcommon.txt')  
M = brede_mat_elimstop(M, 'filename', 'stop_pubmed_neg1.txt')  
[W, H] = brede_mat_nmf(M, 'Info', 5)
```

# Text and volume: Functional atlas

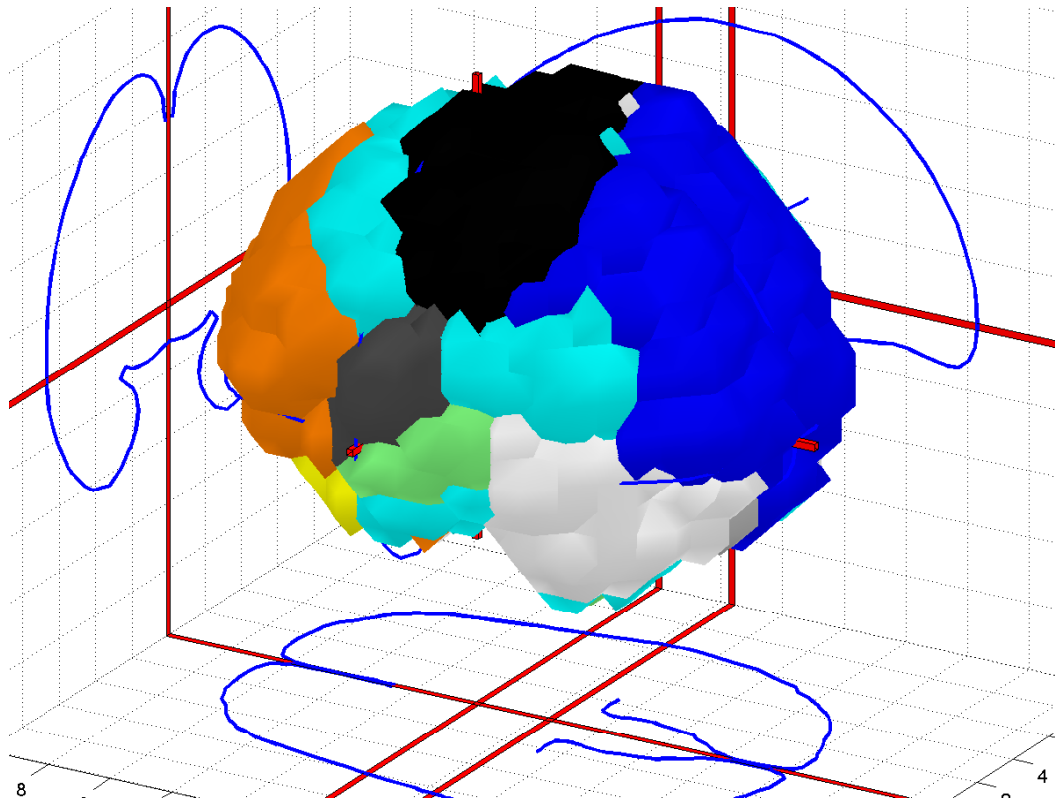


Figure 9: Functional atlas in 3D visualization.

Automatic construction of functional atlas, where words for function become associated with brain areas

Blue area: visual, eye, time

Black: motor, movements, hand

White: faces, perceptual, face

Green: auditory, spatial, neglect, awareness, language

Orange: semantic, phonological, cognitive, decision

## Functional atlas — medial view

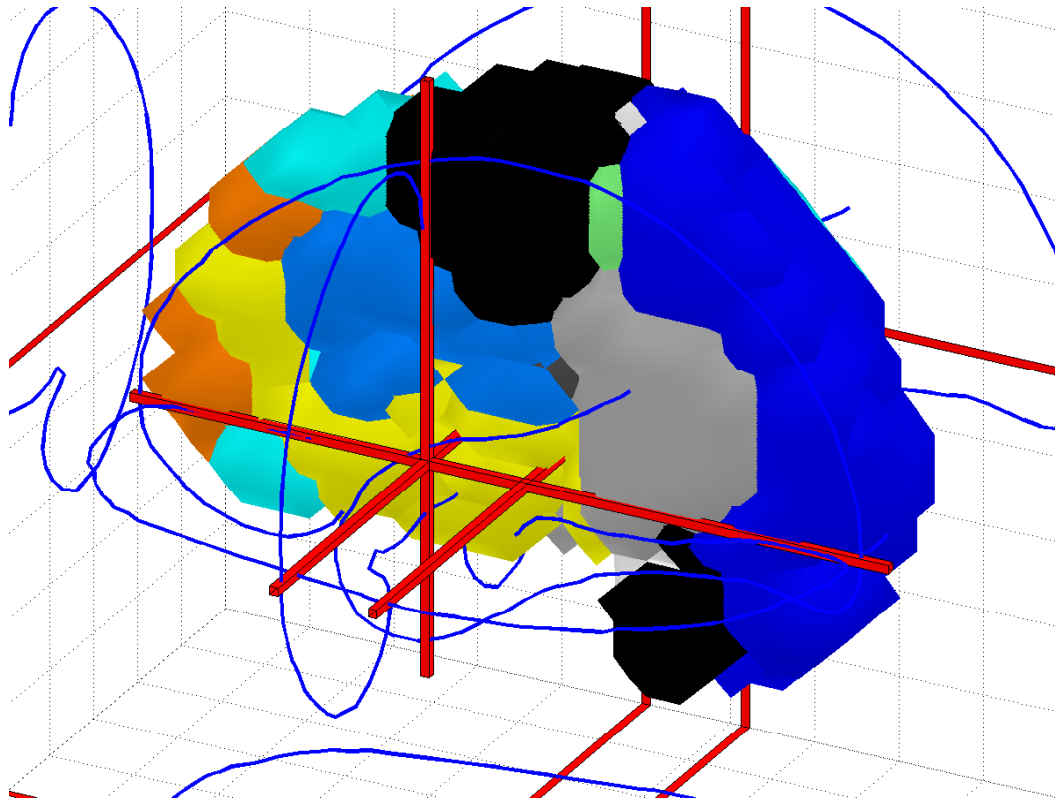


Figure 10: Visualization of the medial area.

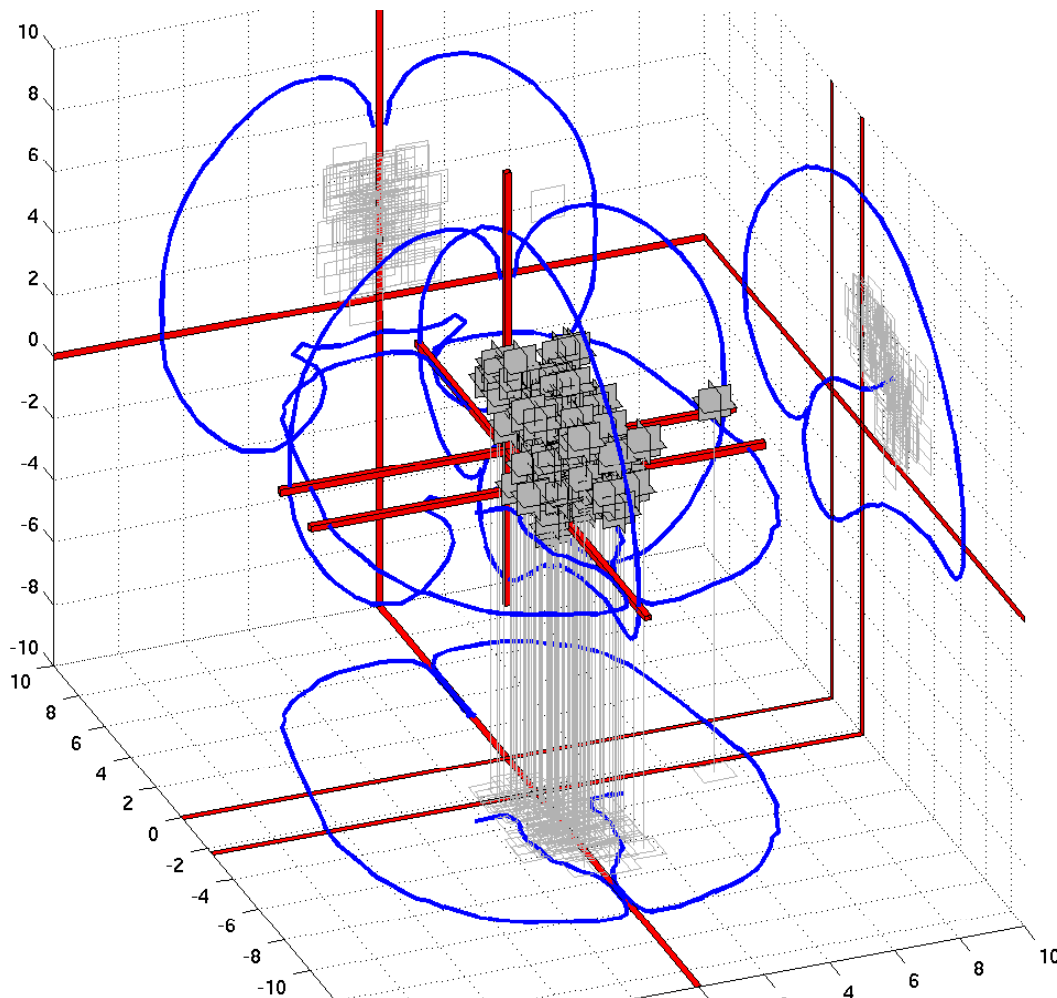
Grey area: retrieval, neutral, words, encoding.

Yellow: emotion, emotions, disgust, sadness, happiness

Light blue: pain, noxious, verbal, unpleasantness, hot

Constructed with a text matrix and a matrix with volumes and NMF.

# Searching on a specific area

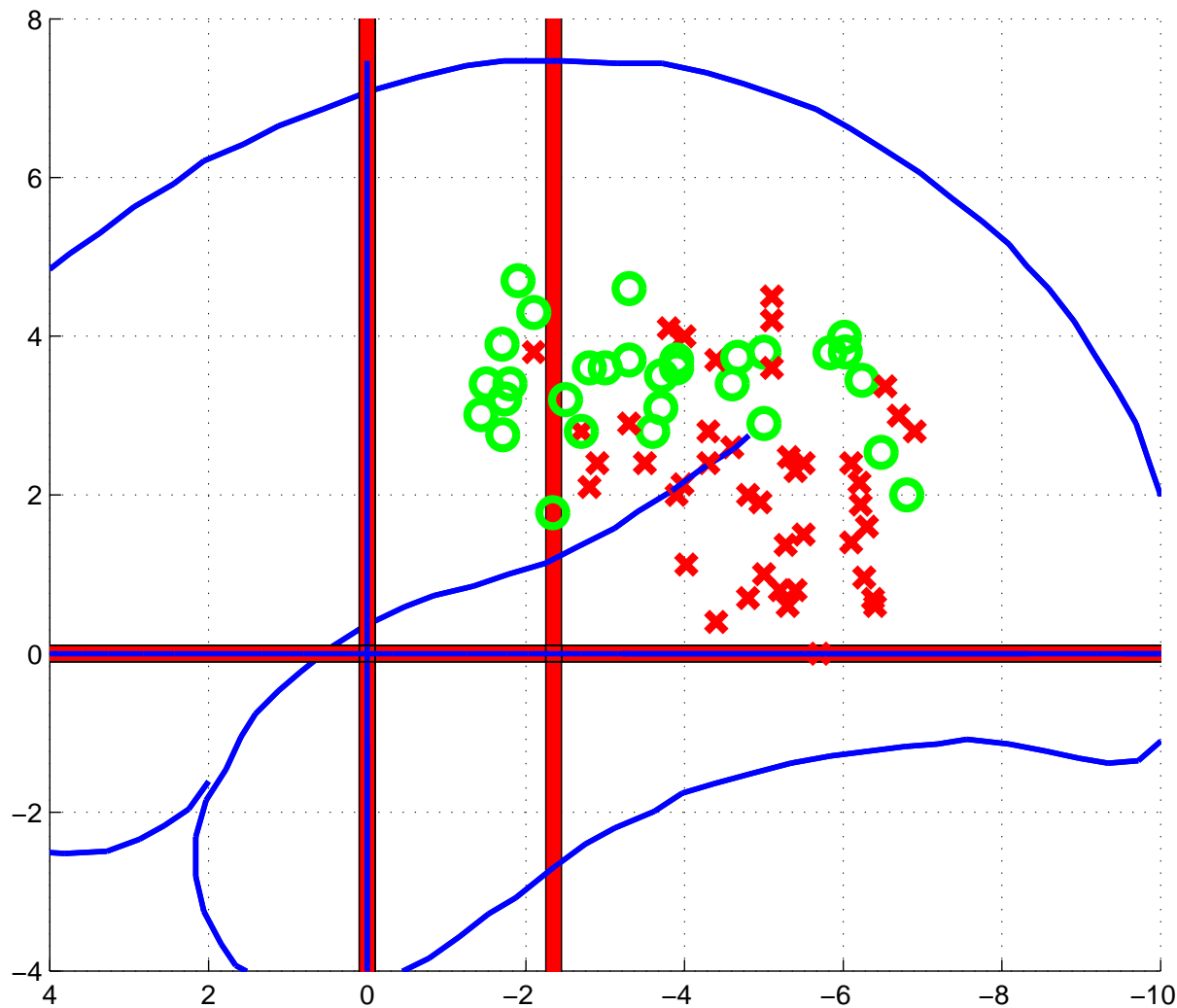


Searching for all coordinates labeled as “posterior cingulate”: Here 116 “posterior cingulate” coordinates.

One outlier: “Right postcentral gyrus/posterior cingulate gyrus” from (Jernigan et al., 1998).

Possible to find the corresponding articles for the coordinates — and cluster these articles

# Memory and pain



Is there a difference between how memory and pain coordinates distribute in posterior cingulate?

Sagittal plot of memory (red x) and pain (green circles).

Apparently the memory coordinates have a tendency to lie in the posterior/inferior part for posterior cingulate.

# Imaging databases

**fMRIDC:** fMRI Data Center stores scanning data from fMRI studies. With Internet-based search.

**Neurogenerator:** Storing, information retrieval and visualization of imaging data.

**SumsDB:** Cortex surface-based database.

**Rodent databases:** NeSys (projections), Mouse brain library: Nissl-stained

**BrainInfo** (NeuroNames): Database of brain structures.

Connectivity databases: CoCoMac, CoCoDat, BAMS, XANAT, ...



# CoCoMac connectivity database

Connectivity output list, PrimaryProjections 34 Items, page 1/2 select page: 1 2

SearchString: ('CD') [KEYWORDS]

HTML -> Browse items per page 20 order by SourceMap ascending

display all results edit search show url back to search start new search

Item	SourceSite	PDC	Hemisph.	Density	PDC	Course	TargetSite	PDC	Hemisph.	Laminae
1.	B09-19	D	?	X	-	I	BD77-Cd	A	?	Laminae LS
2.	B09-19	D	?	X	-	I	BD77-Cd	A	?	Laminae LS
3.	B09-18	D	?	X	-	I	BD77-Cd	A	?	Laminae LS
4.	B09-18	D	?	X	-	I	BD77-Cd	A	?	Laminae LS
5.	B09-18	D	?	X	-	I	BD77-Cd	A	?	Laminae LS
6.	B09-18	D	?	X	-	?	BD77-Cd	F	?	Laminae LS
7.	RTMB99-Cd	L	L	0	-	I	RTMB99-PMdr	C	L	Laminae LS
8.	RTMB99-Cd	L	L	0	-	I	RTMB99-PMdr	C	L	Laminae LS
9.	RTMB99-Cd	L	L	0	-	I	RTMB99-46sup	C	L	Laminae LS
10.	RTMB99-Cd	L	L	0	-	I	RTMB99-PMdc	C	L	Laminae LS
11.	RTMB99-Cd	L	L	0	-	I	RTMB99-46inf	C	L	Laminae LS
12.	RTMB99-Cd	L	L	0	-	I	RTMB99-PMvc	C	L	Laminae LS
13.	RTMB99-Cd	L	L	0	-	I	RTMB99-PMv	C	L	Laminae LS
14.	RTMB99-Cd	L	L	0	-	I	RTMB99-PMdc	C	L	Laminae LS
15.	RTMB99-Cd	L	L	0	-	I	RTMB99-PMdc	C	L	Laminae LS
16.	RTMB99-Cd	L	L	0	-	I	RTMB99-PMdc	C	L	Laminae LS
17.	RTMB99-Cd	L	L	0	-	I	RTMB99-SMA	C	L	Laminae LS
18.	RTMB99-Cd	L	L	0	-	I	RTMB99-PMvr	C	L	Laminae LS
19.	RTMB99-Cd	L	L	0	-	I	RTMB99-SMA	C	L	Laminae LS
20.	RTMB99-Cd	L	L	0	-	I	RTMB99-M1	C	L	Laminae LS

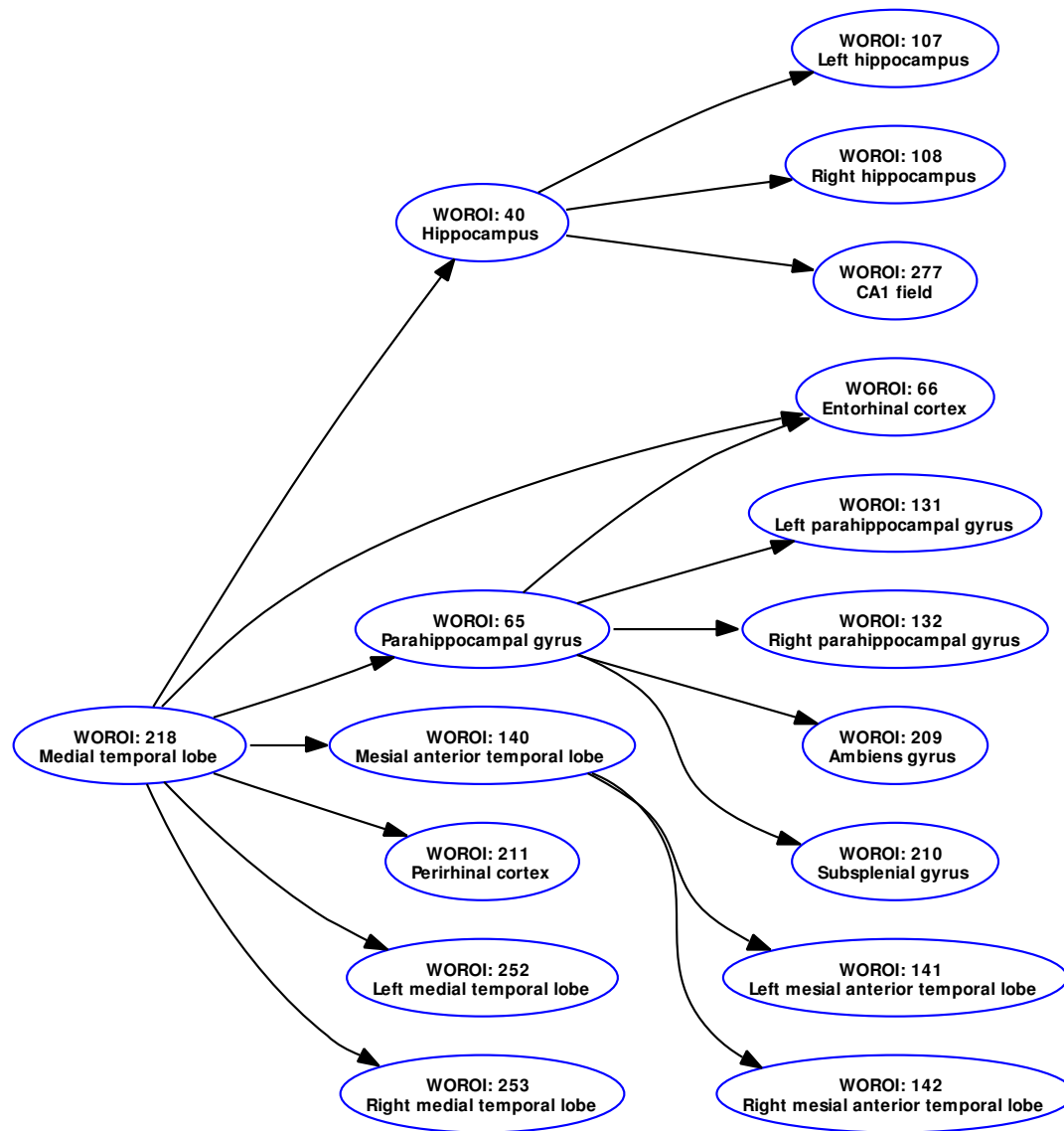
CoCoMac records anatomical connectivity in the Macaque brain with data from presently 413 papers.

Brain region ontology (Stephan et al., 2000).

Stores “from”, “to” and how strong the link is, what tracer, etc.

Visualization of connectivity, analysis of, e.g., small-worldness (Sporns et al., 2004)

# Brede brain region taxonomy



Taxonomy of neuroanatomical areas.

Items linked in a hierarchy with “Brain” in the top root and smaller areas in the leafs.

Based on another neuroanatomical database “BrainInfo/NeuroNames” (Bowden and Martin, 1995; Bowden and Dubach, 2003) and atlases, e.g. “Mai atlas” (Mai et al., 1997).

Fields recorded: Canonical name, variation in names, abbreviations, links to NeuroNames and other databases.

# Example on connectivity matrix

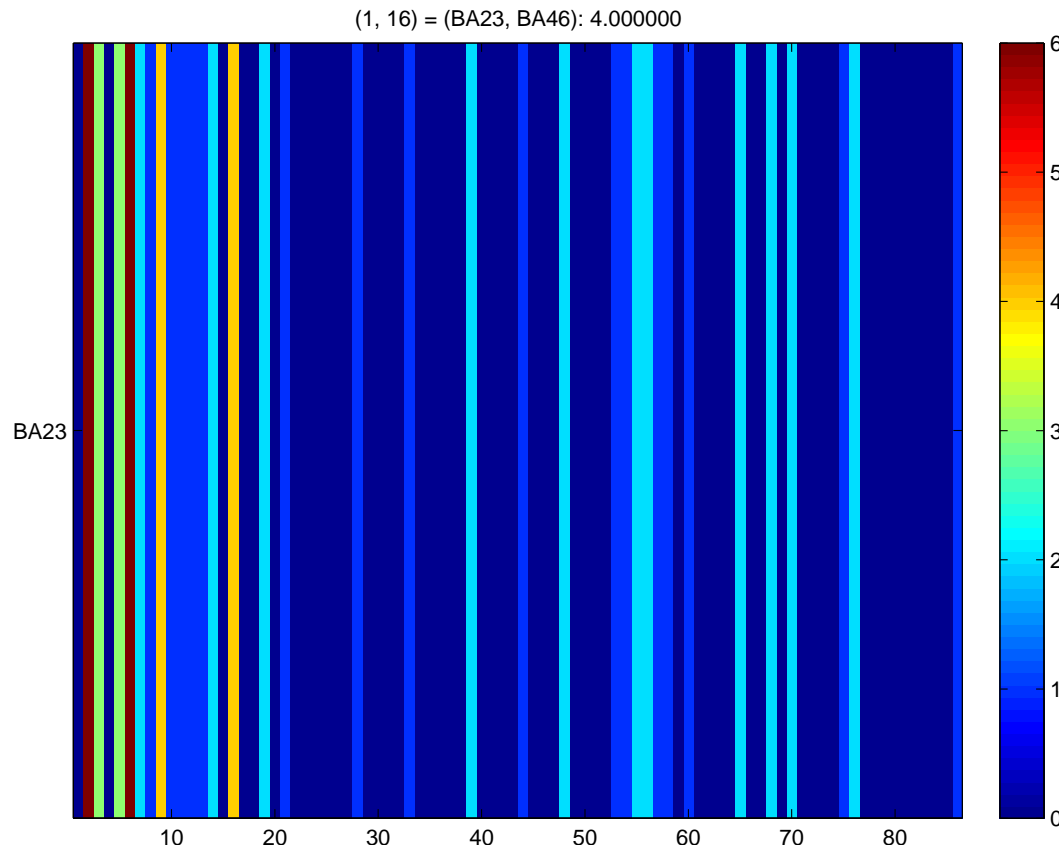


Figure 11: Connection-''matrix'' from BA23. Row as source brain site, columns as target brain site.

Download XML-file with 308 entries for area 23 (i.e., BA23) as "source" "brain site" when querying CoCo-Mac.

Matching CoCoMac brain sites to Brede brain region taxonomy.

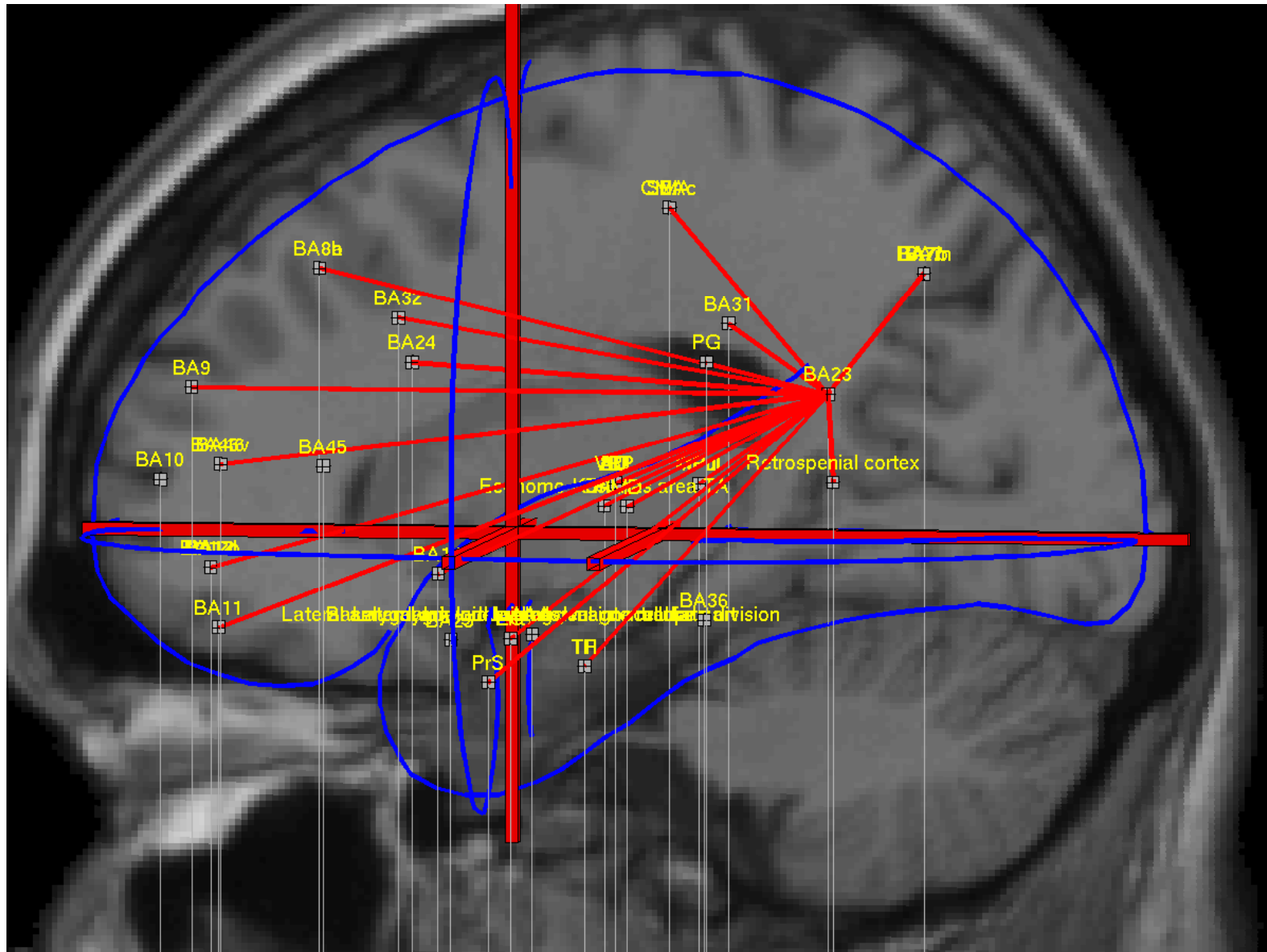
86 brain areas matched with 33 brain areas with non-zero (anatomical) connections.

These can be plotted in 3D stereotaxic space.

## Matlab commands

Four matlab commands to readin, convert, display and print the CoCoMac data with the Brede Toolbox:

```
S23 = brede_read_xml_cocomac('cocomac_connectivity_23.xml');  
M23 = brede_cocomac_connectivity2mat(S23);  
brede_ui_mat(M23)  
print -depsc /home/fnielsen/fnielsen/eps/Nielsen2006Linking_ba23.eps
```



# Data entry

## CIMBI Gene Personality Associations

DTU Informatics >>> HBP > Services > Gene Personality Associations [Login](#) or [New account](#)

Field	Value	Suggestions	Description
Id	523	(fixed)	Database identifier
Gene	TPH1	<input type="text" value="TPH1"/>	HUGO gene symbol
Polymorphism	A218C	<input type="text" value="A218C"/>	Polymorphism
Genotype	A/A	<input type="text" value="A/A"/>	Genotype
Inventory	TCI	<input type="text" value="TCI"/>	Psychology test questionnaire
Trait	Self-transcendence	<input type="text" value="Self-transcendence"/>	Dimension in the inventory
Mean	12.0		Mean value for the group
Std	4.3	SEM: <input type="text"/>	Standard deviation for the group
Number of subjects	41		Number of subjects in the group
Recruitment	Healthy Germans	<input type="text" value="Healthy Germans"/>	Type of group of subjects/patients
PMID	15925123		PubMed identifier

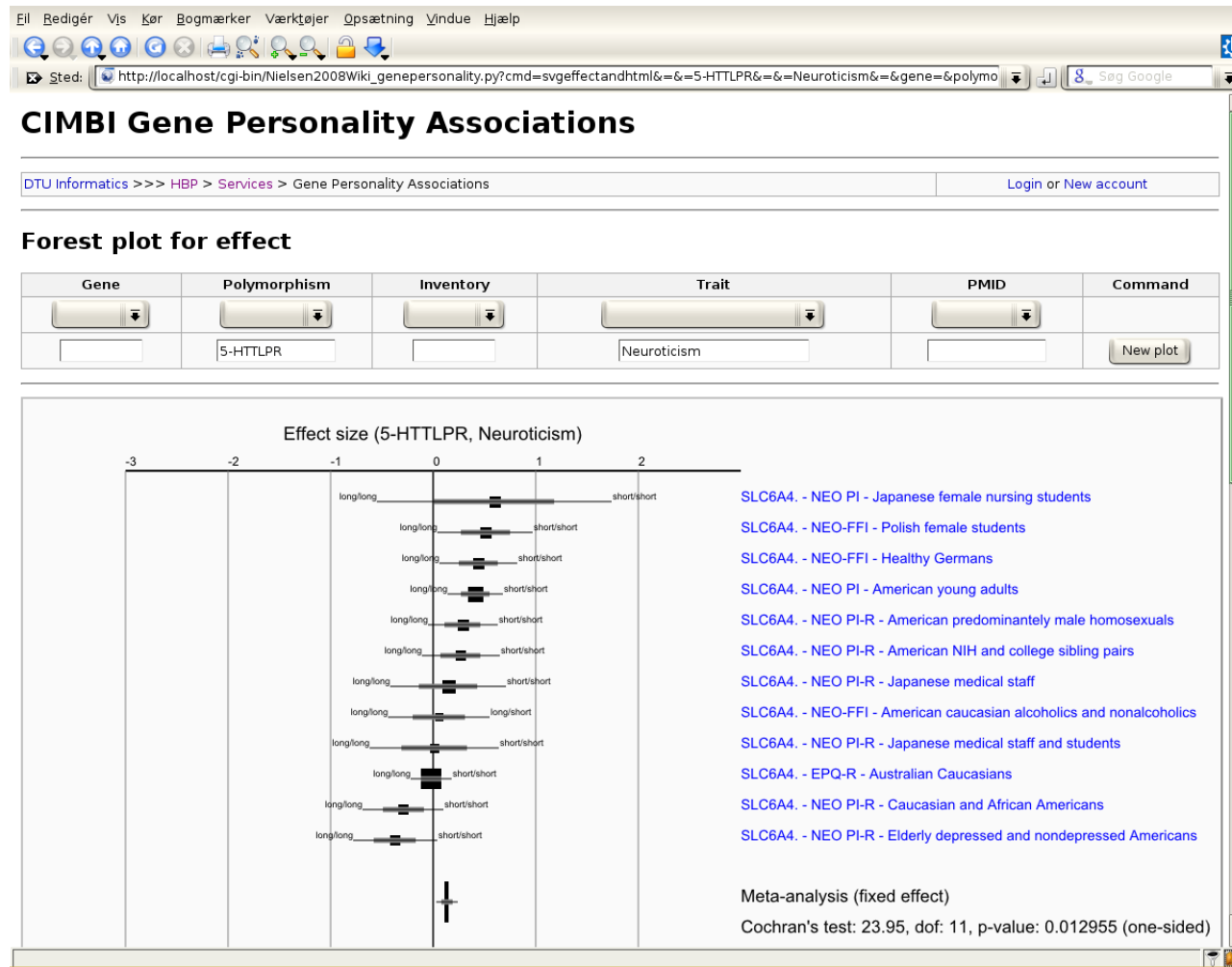
Figure 12: Wiki-based interface to type in results from gene personality association studies.

Data entry is time consuming

Perhaps entry through a simple web-based interface with immediate sharing of data — a wiki — will encourage collaborative entry?

Example with personality genetics association studies: Is genetics variation linked to personality traits?

# Automatic meta-analysis



A so-called *forest plot* of gene-personality association *effect sizes* of results in the wiki

Automatic meta-analysis

Entire wiki with entry, SVG graphics and meta-analysis implemented in a single Python script with a SQLite database backend

## More information

Article: “fMRI Neuroinformatics” (Nielsen et al., 2006)

Brede Database

Brede Toolbox

Bibliography on Neuroinformatics:

<http://www.imm.dtu.dk/~fn/bib/Nielsen2001Bib/>



# Brede database on the web



The screenshot shows a Mozilla browser window with the address bar containing `http://hendrix.imm.dtu.dk/services/jerne/brede/brede.html`. The page title is "Brede database" and the breadcrumb is "Jerne > Brede database". The main content area lists various database and search options:

- Database: [wobibs.xml](#) | [wobibs.mat](#) | [woexts.xml](#) | [woexts.mat](#)
- Bib: [Asymmetry](#) | [Authors](#) | [ICA](#) | [NMF](#) | [Novelty](#) | [Statistics](#) | [SVD](#) | [Title](#) | [WOBIB](#)
- Exp: [Alphabetic](#) | [Asymmetry](#) | [ICA](#) | [NMF](#) | [Novelty](#) | [SVD](#) | [WOEXP](#) | [WOEXT](#)
- Ext: [Alphabetic index](#) | [Map](#) | [Roots](#)
- Examples: [Epstein and Kanwisher](#) | [Face recognition](#) | [London taxi drivers morphometry](#) | [Alzheimer change](#)

Below the examples is a search box with the text "Search Brede Database".

Other indices: [Lobar anatomy novelty](#) | [Function - coordinate associations](#) | [Glossary](#)

## Description

The Brede database: The main component in this database is data from functional neuroimaging scientific articles containing Talairach coordinates. Each article in this database is identified by a unique number: A 'WOBIB'. Some of the structure of the Brede database is similar to the structure of the [BrainMap database](#) ([Research Imaging Center](#), San Antonio).

The Brede database is also distributed with the [Brede neuroinformatics toolbox](#).

# References

Balslev, D., Nielsen, F. Å., Paulson, O. B., and Law, I. (2005). Right temporoparietal cortex activation during visuo-proprioceptive conflict. *Cerebral Cortex*, 15(2):166–169. PMID: 152384438. WOBIB: 128. <http://cercor.oupjournals.org/cgi/content/abstract/15/2/166?etoc>.

Blinkenberg, M., Bonde, C., Holm, S., Svarer, C., Andersen, J., Paulson, O. B., and Law, I. (1996). Rate dependence of regional cerebral activation during performance of a repetitive motor task: a PET study. *Journal of Cerebral Blood Flow and Metabolism*, 16(5):794–803. PMID: 878424. WOBIB: 166.

Bowden, D. M. and Dubach, M. F. (2003). NeuroNames 2002. *Neuroinformatics*, 1(1):43–59. ISSN 1539-2791.

Bowden, D. M. and Martin, R. F. (1995). NeuroNames brain hierarchy. *NeuroImage*, 2(1):63–84. PMID: 9410576. ISSN 1053-8119.

Fox, P. T. and Lancaster, J. L. (2002). Mapping context and content: the BrainMap model. *Nature Reviews Neuroscience*, 3(4):319–321. <http://www.brainmapdbj.org/Fox01context.pdf>. Describes the philosophy behind the (new) BrainMap functional brain imaging database with “BrainMap Experiment Coding Scheme” and tables of activation foci. Furthermore discusses financial issues and quality control of data.

Fox, P. T., Lancaster, J. L., Parsons, L. M., Xiong, J.-H., and Zamarripa, F. (1997). Functional volumes modeling: Theory and preliminary assessment. *Human Brain Mapping*, 5(4):306–311. <http://www3.interscience.wiley.com/cgi-bin/abstract/56435/START>.

Fox, P. T., Mikiten, S., Davis, G., and Lancaster, J. L. (1994). BrainMap: A database of human function brain mapping. In Thatcher, R. W., Hallett, M., Zeffiro, T., John, E. R., and Huerta, M., editors, *Functional Neuroimaging: Technical Foundations*, chapter 9, pages 95–105. Academic Press, San Diego, California. ISBN 0126858454.

Gallagher, H. L., Jack, A. I., Roepstorff, A., and Frith, C. D. (2002). Imaging the intentional stance in a competitive game. *NeuroImage*, 16(3 Part 1):814–821. PMID: 12169265. ISSN 1053-8119.

- Ingvar, M. (1999). Pain and functional imaging. *Philosophical Transactions of the Royal Society of London. Series B, Biological Sciences*, 354(1387):1347–1358. PMID: 10466155.
- Jernigan, T. L., Ostergaard, A. L., Law, I., Svarer, C., Gerlach, C., and Paulson, O. B. (1998). Brain activation during word identification and word recognition. *NeuroImage*, 8(1):93–105. PMID: 9698579. WOBIB: 35.
- Law, I., Svarer, C., Holm, S., and Paulson, O. B. (1997). The activation pattern in normal man during suppression, imagination and performance of saccadic eye movements. *Acta Physiologica Scandinavica*, 161(3):419–434. PMID: 9401596. WOBIB: 135. ISSN 0001-6772.
- Lee, D. D. and Seung, H. S. (1999). Learning the parts of objects by non-negative matrix factorization. *Nature*, 401(6755):788–791. PMID: 10548103.
- Lee, D. D. and Seung, H. S. (2001). Algorithms for non-negative matrix factorization. In Leen, T. K., Dietterich, T. G., and Tresp, V., editors, *Advances in Neural Information Processing Systems 13: Proceedings of the 2000 Conference*, pages 556–562, Cambridge, Massachusetts. MIT Press. <http://hebb.mit.edu/people/seung/papers/nmfconverge.pdf>. CiteSeer: <http://citeseer.ist.psu.edu/lee00algorithms.html>.
- Mai, J. K., Assheuer, J., and Paxinos, G. (1997). *Atlas of the Human Brain*. Academic Press, San Diego, California. ISBN 0124653618.
- Neumann, J., Lohmann, G., Derrfuss, J., and von Cramon, D. Y. (2005). Meta-analysis of functional imaging data using replicator dynamics. *Human Brain Mapping*, 25(1):165–173. <http://www3.interscience.wiley.com/cgi-bin/abstract/110474181/>. ISSN 1065-9471.
- Nielsen, F. Å. (2003). The Brede database: a small database for functional neuroimaging. *NeuroImage*, 19(2). <http://208.164.121.55/hbm2003/abstract/abstract906.htm>. Presented at the 9th International Conference on Functional Mapping of the Human Brain, June 19–22, 2003, New York, NY. Available on CD-Rom.
- Nielsen, F. Å. (2005). Mass meta-analysis in Talairach space. In Saul, L. K., Weiss, Y., and Bottou, L., editors, *Advances in Neural Information Processing Systems 17*, pages 985–992, Cambridge, MA. MIT Press. [http://books.nips.cc/papers/files/nips17/NIPS2004\\_0511.pdf](http://books.nips.cc/papers/files/nips17/NIPS2004_0511.pdf).

Nielsen, F. Å., Balslev, D., and Hansen, L. K. (2005). Mining the posterior cingulate: Segregation between memory and pain component. *NeuroImage*, 27(3):520–532. DOI: 10.1016/j.neuroimage.2005.04.034. Text mining of PubMed abstracts for detection of topics in neuroimaging studies mentioning posterior cingulate. Subsequent analysis of the spatial distribution of the Talairach coordinates in the clustered papers.

Nielsen, F. Å., Chen, A. C. N., and Hansen, L. K. (2004a). Testing for difference between two groups of functional neuroimaging experiments. In Olsen, S. I., editor, *Proceedings fra den 13. Danske Konference i Mønstergenkendelse og Billedanalyse*, number 2004/10 in DIKU Technical Reports, pages 121–129, Copenhagen, Denmark. Dansk Selskab for Automatisk Genkendelse af Mønstre, Datalogisk Institut, University of Copenhagen. <http://www.diku.dk/dsagm04/proceedings.dsagm04.pdf>. ISSN 0107-8283.

Nielsen, F. Å., Christensen, M. S., Madsen, K. H., Lund, T. E., and Hansen, L. K. (2006). fMRI neuroinformatics. *IEEE Engineering in Medicine and Biology Magazine*, 25(2):112–119. PMID: 16568943. [http://www2.imm.dtu.dk/pubdb/views/publication\\_details.php?id=3516](http://www2.imm.dtu.dk/pubdb/views/publication_details.php?id=3516). An overview of some of the tools for and issues in fMRI neuroinformatics with description of, e.g., the SPM, AFNI and FSL programs and the BrainMap, fMRIDC and Brede databases.

Nielsen, F. Å. and Hansen, L. K. (2002). Modeling of activation data in the BrainMap<sup>TM</sup> database: Detection of outliers. *Human Brain Mapping*, 15(3):146–156. DOI: 10.1002/hbm.10012. <http://www3.interscience.wiley.com/cgi-bin/abstract/89013001/>. Cite-See: <http://citeseer.ist.psu.edu/nielsen02modeling.html>.

Nielsen, F. Å., Hansen, L. K., and Balslev, D. (2004b). Mining for associations between text and brain activation in a functional neuroimaging database. *Neuroinformatics*, 2(4):369–380. [http://www2.imm.dtu.dk/~fn/ps/Nielsen2004Mining\\_submitted.pdf](http://www2.imm.dtu.dk/~fn/ps/Nielsen2004Mining_submitted.pdf).

Sporns, O., Chialvo, D. R., Kaiser, M., and Hilgetag, C. C. (2004). Organization, development and function of complex brain networks. *Trends in Cognitive Sciences*, 8(9):418–425.

Stephan, K. E., Zilles, K., and Kötter, R. (2000). Coordinate-independent mapping of structural and functional data by objective relational transformation (ORT). *Philosophical Transactions of the Royal Society, London, Series B, Biological Sciences*, 355(1393):37–54. PMID: 10703043.

Szewczyk, M. M. (2008). Databases for neuroscience. Master's thesis, Technical University of Denmark, Kongens Lyngby, Denmark. <http://orbit.dtu.dk/getResource?recordId=223565&objectId=1&versionId=1>. IMM-MSC-2008-92.

Turkeltaub, P. E., Eden, G. F., Jones, K. M., and Zeffiro, T. A. (2002). Meta-analysis of the functional neuroanatomy of single-word reading: method and validation. *NeuroImage*, 16(3 part 1):765–780. PMID: 12169260. DOI: 10.1006/nimg.2002.1131. <http://www.sciencedirect.com/science/article/B6WNP-46HDMPV-N/2/xb87ce95b60732a8f0c917e288efe59004>.

Wilkowski, B., Szewczyk, M., Rasmussen, P. M., Hansen, L. K., and Nielsen, F. Å. (2009). Coordinate-based meta-analytic search for the SPM neuroimaging pipeline. In *International Conference on Health Informatics (HEALTHINF 2009)*.