

Software Engineering 2

Installing Eclipse and extensions (including EMF, GMP, Subversion, and Java 3D)

Ekkart Kindler

DTU Informatics

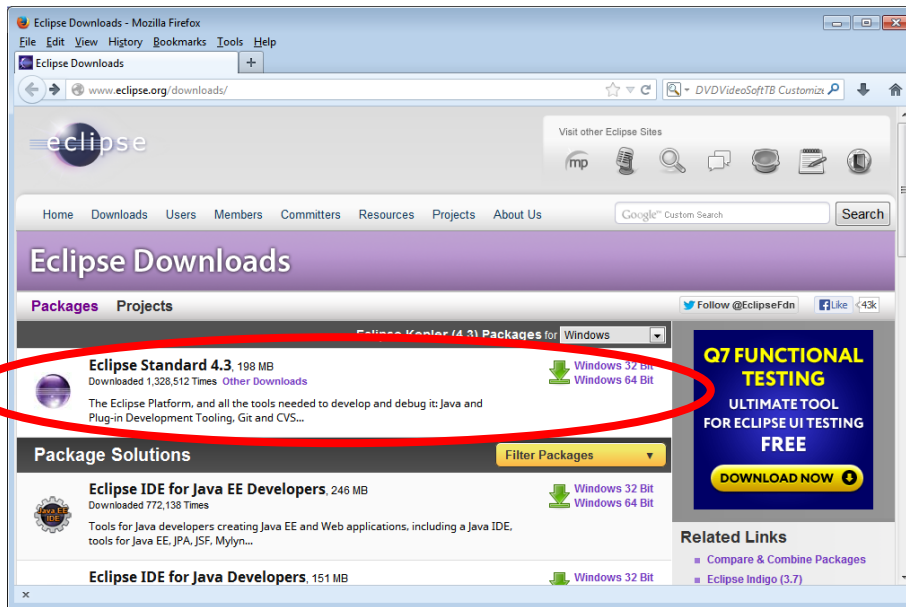
Department of Informatics and Mathematical Modeling

Note: If you use Windows, you do not need to follow through these instructions! You can just download a pre-configured eclipse installation from:

<http://www2.imm.dtu.dk/courses/02162/e13/project/download/eclipse-SDK-43-win32-dtu-se2.zip>

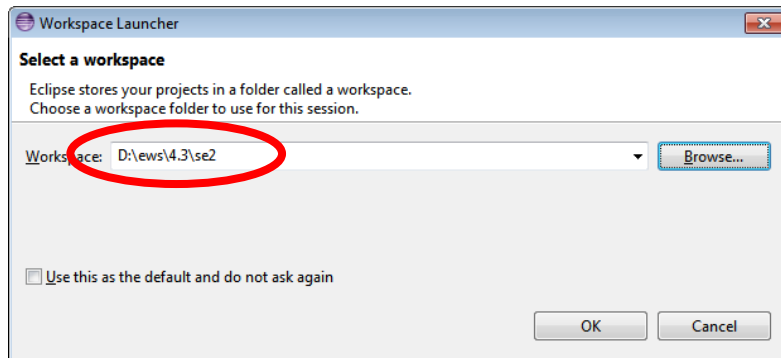
Extract the file to some directory and start eclipse.exe

Download Eclipse



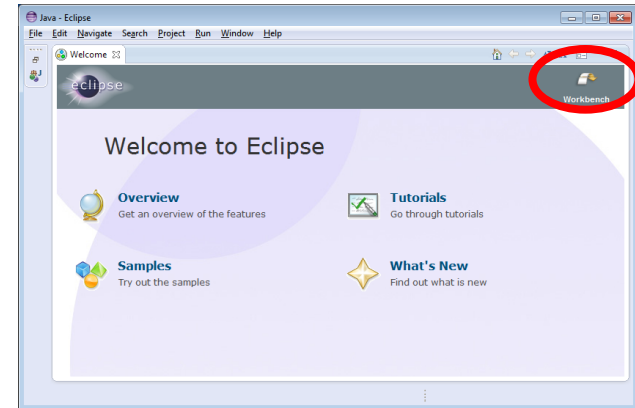
- You should have a **Java 6 JRE** (or higher) installed before you can install eclipse
- Download “Eclipse Standard 4.3” for your platform from <http://www.eclipse.org/downloads/>
- Extract the downloaded file to whichever location you want eclipse to be installed on your computer
- In the extracted structure, there will be a folder “eclipse” on the top level. This folder contains an executable file “eclipse” (e.g. “eclipse.exe” on the Windows platform); executing this file will start eclipse

- At the first start of eclipse, you will be asked for a directory for the eclipse workspace (the place where all your eclipse projects will be stored)

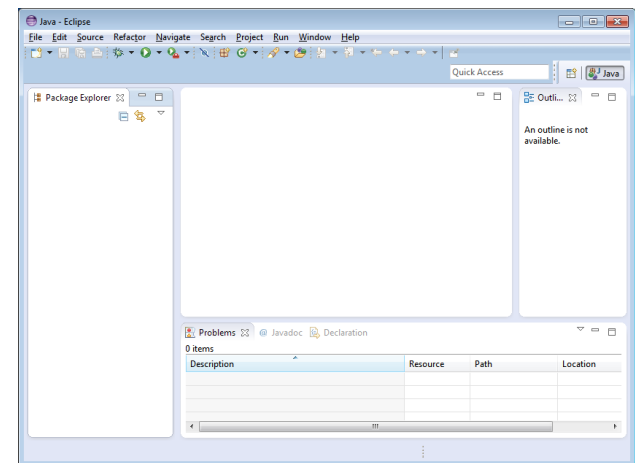


- Choose one (on Windows platforms, make sure that the path is not too long!)

- Then, eclipse will look like

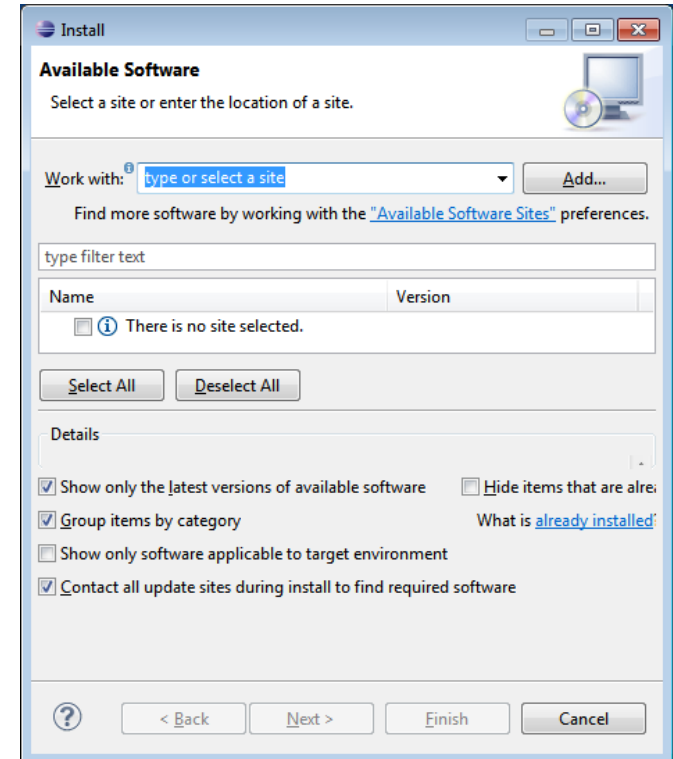
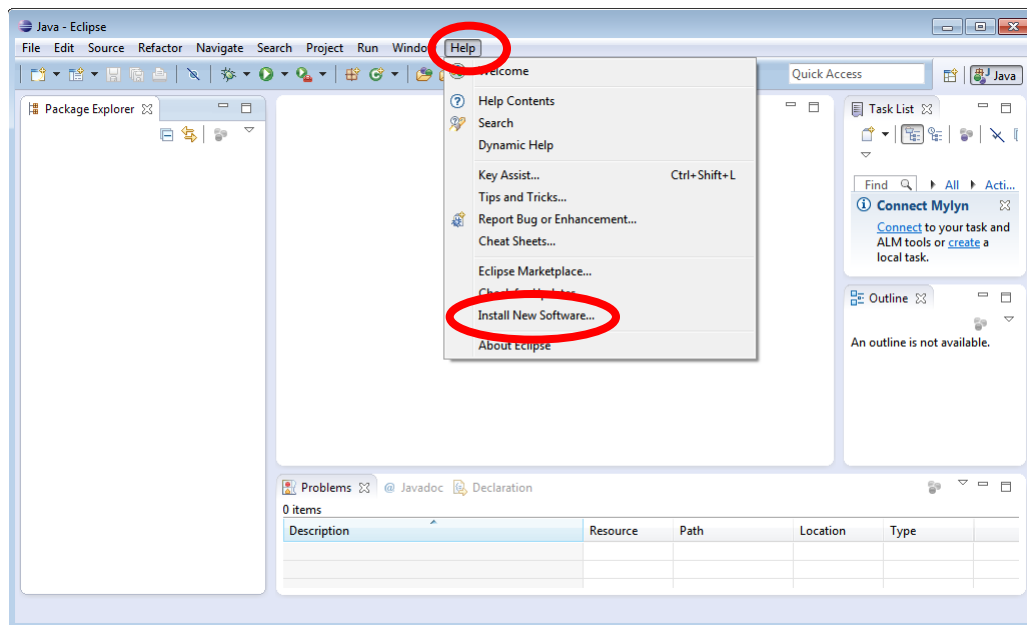


- and after a click on "workbench" like this

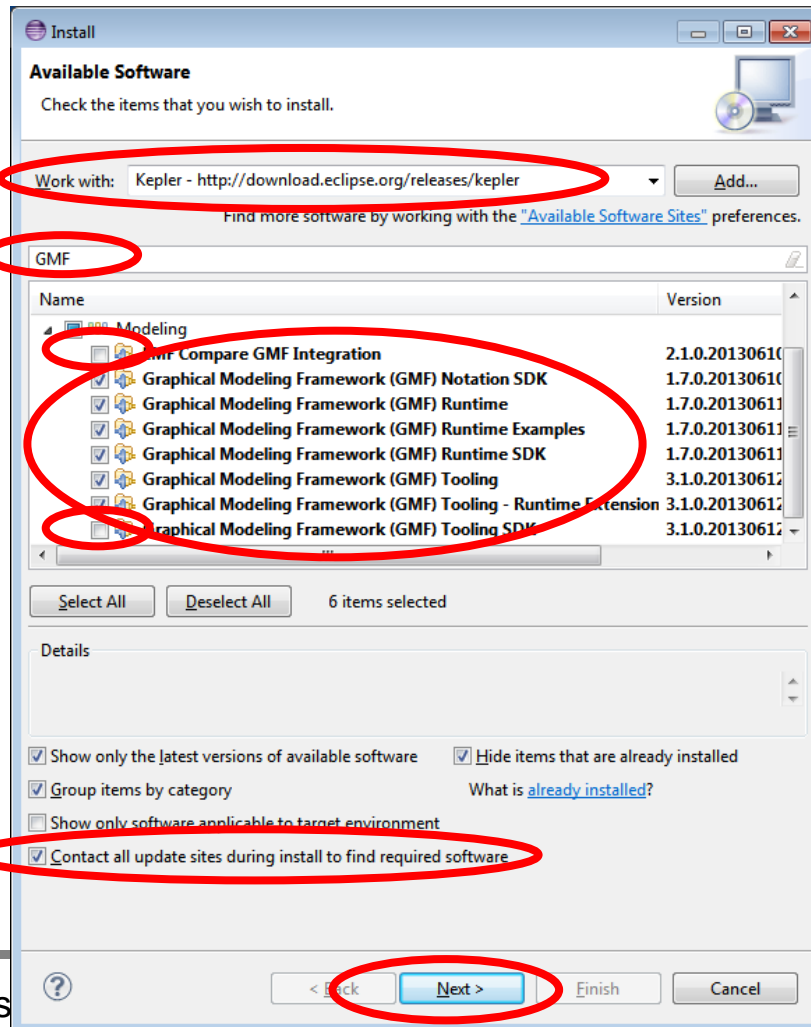


- Next, we install EMF and GMP (GMF)
- To do this select Help → Install New Software...

- Then, the following Install dialog will open

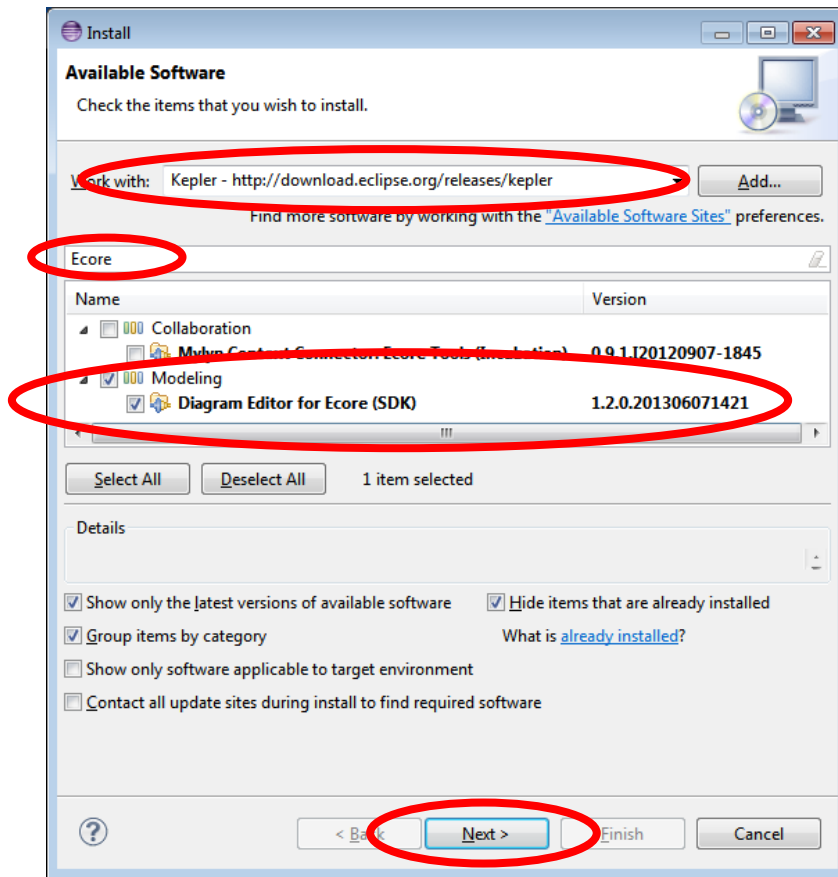


- In the open Install dialog, select the Indigo download site:
<http://download.eclipse.org/releases/kepler>

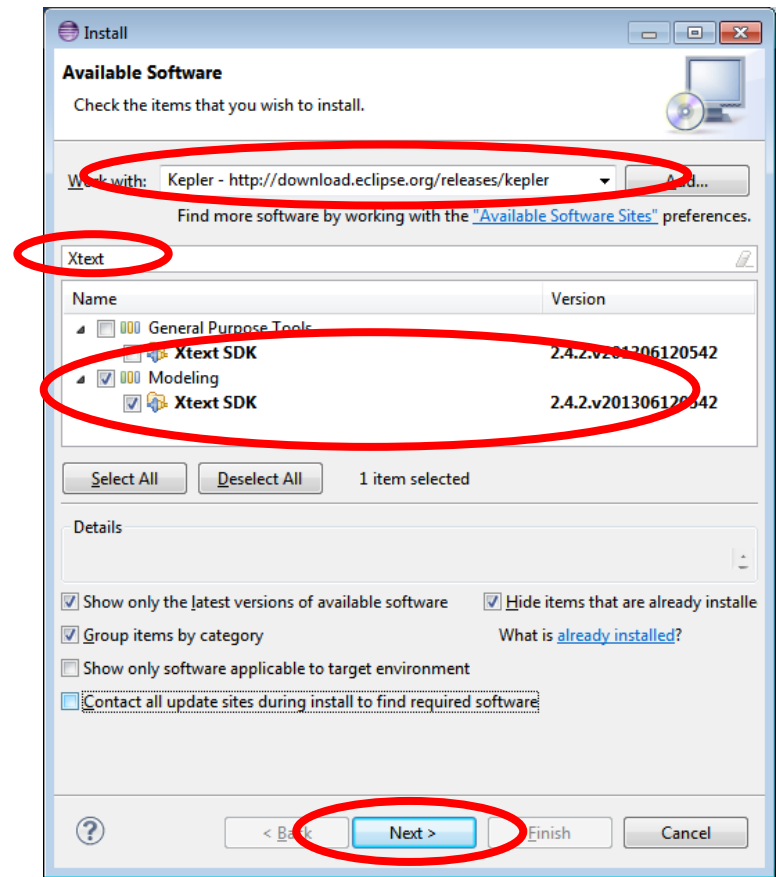


- Add “GMF” to the filter field and
- select all the “Graphical Modeling Framework (GMF)” features **except for the “Tooling SDK” and “EMF Compare GMF Integration”**,
- make sure that you have checked the “Contact all update sites during install to find required software”,
- then follow the installation dialogs:
 - don’t forget to accept the license agreement
 - it is a good idea to restart eclipse after the install (you will be prompted for that after the installation)

- In the same way, install “Ecore Tools SDK” from the Indigo download site; “Ecore” as a filter should do:

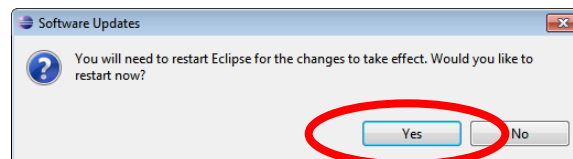


- and also install the “Xtext SDK”; “Xtext” as a filter should do

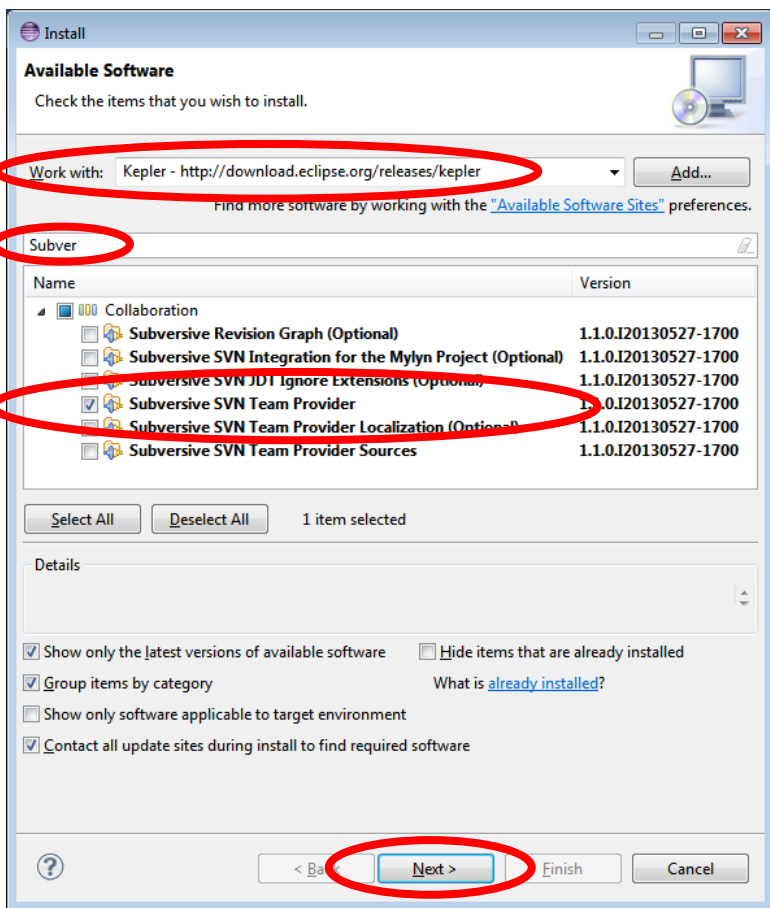
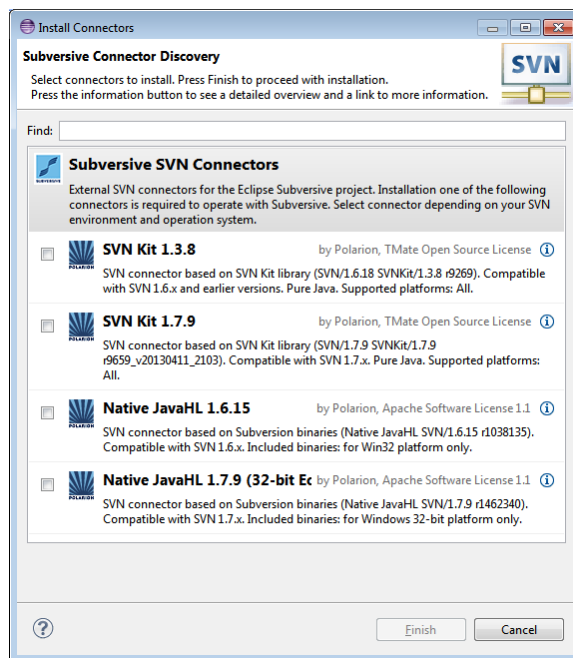


- At last install the “Subversive SVN Team Provider”; “Subver” as a filter should do

- After that, you MUST restart eclipse



- When you use Subversive functions for the first time after the restart, the following dialog starts up:



- In this dialog, select the newest version of the SVN Kit which works for SVN 1.6.x (right now SVN Kit 1.3.7) and finish

- If you want to force this dialog to open, you can, for example, open the SVN perspective via

Window → Open Perspective → Other... → SVN Repository Exploring

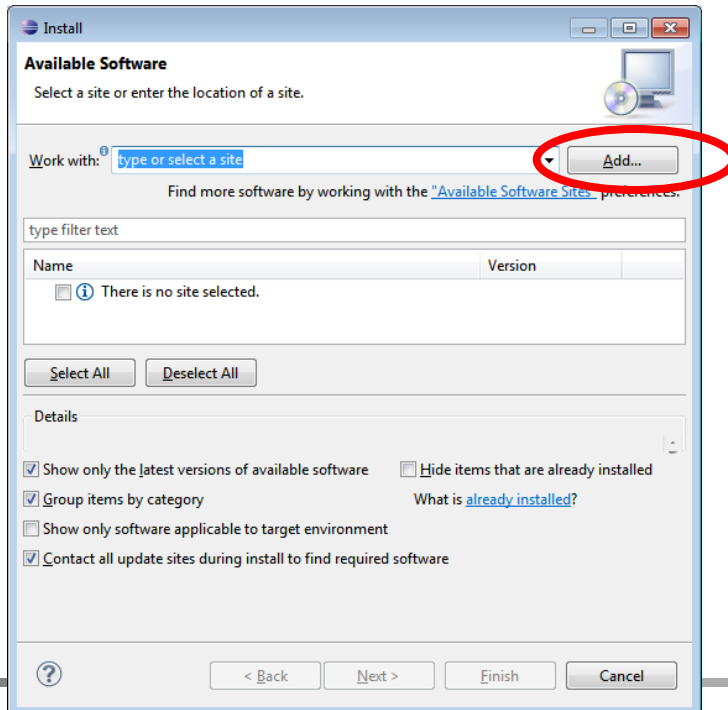
- **Recommendation:**
Do this right away!!

Otherwise, you might forget about that later and be surprised by strange error messages that you do not understand.

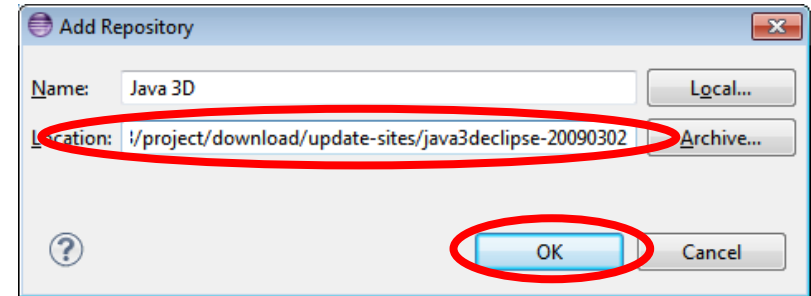


- If you want to use Java 3D, you need to add our specific SE2 Java3D update site:

<http://www2.imm.dtu.dk/courses/02162/e13/project/download/update-sites/java3declipse-20090302/>



- After pressing the Add... Button enter the URL and some name to the following dialog and press OK.



- The Install dialog for that site will open as shown on the next slide

- In the now open Install dialog for the new update site, select all features and follow through the dialogs.

